

DataFlex Reports

Vincent Oorsprong

Product update status

- › Since last Scanduc (dec 2021)
 - › Release of v8.1
 - › Release of v8.2

Version 8.1

- › New features
- › Bugfixes
 - › See the what's new in the help file

Version 8.1 – New Features

- › Multiple databases from same SQL instance
 - › ODBC wizard interface improvements
- › Current page menu item enhancement
- › Export button in web previewer

Multiple databases

- › Only one data-source per report
 - › RDS, ODBC, DataFlex, SQLite
- › More than one catalog (database) per data-source
 - › Opens option to connect tables from two or more databases
 - › Must be on same server instance
 - › Only tested fully supported with MSSQL

Multiple databases

- › ODBC Wizard changes
 - › Data source name
 - › Attributes

Driver: ODBC Driver 17 for SQL Server

Server: .

Trusted connection

Login Id:

Password:

Database: OrderEntry201

Data source name: Orders

Driver: ODBC Driver 17 for SQL Server

Server: .

Trusted connection

Login Id:

Password:

Database: OrderEntry201

Attributes: |

Multiple databases

› Demo!

Current page menu item

- › Windows integration contained a spinform
 - › No clue how many pages are in the report
- › New property `piPageMaxCombo` added
 - › Less pages than this value shows a combo with page info
 - › More pages falls back to spinform
 - › 50+ pages in a drop-down is not really helpful
 - › Default is -1 for backwards compatibility

Export button in web previewer

- › In Web previewer (HTML or Images) the tool-bar got a new button to export the report in another format
- › Can be shown with `pbShowExportButton` to true
 - › Combine with `pbServerOnExportReport` property to execute the code to export the report results

Version 8.x – Else If

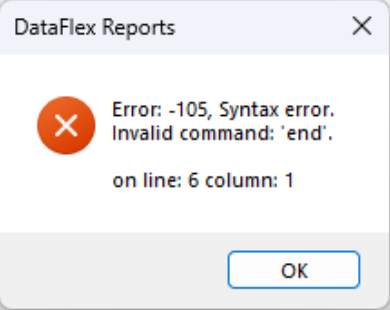
› In v8 “Else if” was added

› v7:

```
Function
if ({Customer.Status} = "N") then
  return "NO"
  else if ({Customer.Status} = "Y") then
    return "YES"
  end
end
```

› v8:

```
Function
if ({Customer.Status} = "N") then
  return "NO"
  else if ({Customer.Status} = "Y") then
    return "YES"
  end
end
```



The error dialog box displays the following text: "Error: -105, Syntax error. Invalid command: 'end'. on line: 6 column: 1".

Version 8.0(.1) – Else If

- › Report version 45 or older (= v7 and older)
 - › May cause runtime failures in v8 at integration
 - › Solution: Open in Studio, fix the problem, save report structure
 - › Opened in Studio: No warning or error until you modify a function or check the syntax

Version 8.1 – Else if

- › Report version 45 or older
 - › On save report in DR Studio: Warning that functions need to be checked
 - › May cause runtime failures in v8 at integration
 - › Solution: Open in Studio, fix the problem, save report structure
- › Report version 47/48
 - › Warning that you might need to check functions upon save
- › General solution: use maintenance tool to upgrade reports to v8 version

Version 8.2

- › New features
- › Bugfixes
 - › See the what's new in the help file

Version 8.2 – New features

- › Pagelayer functions
- › Added properties to control previewer buttons
- › Report engine busy function
- › Report no-cancel function
- › Print changes
- › Horizontal justify

Version 8.2 – Pagelayer functions

- › Dynamically replace the pagelayer in the report
- › Retrieve the number of pagelayers in a report
- › Retrieve the pagelayer ID and name for substitution
- › ImportPageLayer function

Version 8.2 – previewer buttons

- › Visibility of the each of the Windows previewer buttons can be controlled using properties

pbPreviewerShowFirstPageButton
pbPreviewerShowPreviousPageButton
pbPreviewerShowCurrentPage
pbPreviewerShowNextPageButton
pbPreviewerShowLastPageButton
pbPreviewerShowRefreshButton
pbPreviewerShowPrintButton
pbPreviewerShowZoomOptions
pbPreviewerShowExportButton
pbPreviewerShowSearchInPreview
pbPreviewerShowSearchInPreviewOptions

Report engine busy

- › Detect if your code attempts to start a re-entrant operation
 - › Timers could attempt to open a report while the engine is still busy. An error that the report cannot be opened appears
 - › To avoid the error you can now call `IsReportEngineBusy`
- › Does not happen in many cases

Report no cancel – prior to v8.2

- › Status panel cancel button could always be clicked
- › Application never shows ‘does not respond’
- › Developers had to block operations like timers and buttons

Report no cancel – v8.2 and up

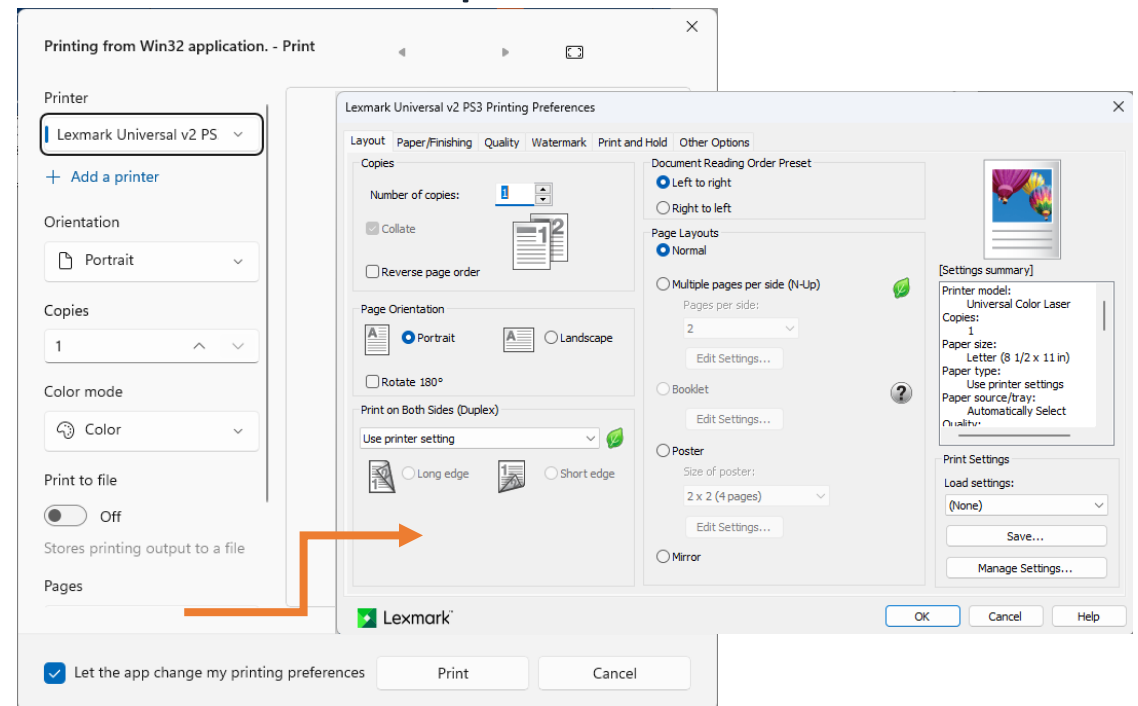
- › Property `pbReportNoCancel` controls whether clicking a cancel button is possible
 - › Default is false as many reports don't need a status panel
 - › If true is needed make sure you disable timers etc
 - › Downside: Windows may report application does not respond

Print changes – New events

- › OnPreShowPrintDialog
- › OnPostShowPrintDialog
- › OnPreReportPrint
- › CopyReportPaperSizeAndOrientation
 - › pbCopyReportPaperSizeAndOrientation

Print changes - cPrintDialog

- › Printing uses the handle to PrintDialog settings
 - › PrintDialog contains standard and custom settings
 - › Custom settings are printer manufacturer specific
 - › Is called property sheets of the driver
 - › Stored as extension of DEVMODE handle
 - › Only size in bytes is known
 - › Some printers refuse to print when custom settings are not present



Print changes - cPrintDialog

- › Not always copy DEVMODE and DEVNAMES
 - › Some printers do not print when DEVMODE / DEVNAMES information gets copied to the PrintDialog settings
 - › Pre v8.2 only print to default printer wasn't copying
 - › Copy use the changed state that is now available for all cPrintDialog properties

Print changes - cPrintDialog

- › PrintDialog has two places to store the device name
 - › Devmode: Fixed at 32 code units / characters
 - › DevNames: Variable length
 - › Prior to v8.2 longer names could cause a conflict

Justify

- › Horizontal text justify has been added

Object <u>N</u> ame:	Customer.Comments
<u>T</u> oolTip Text:	
Horizontal Alignment:	Left <input type="button" value="v"/>
Vertical Alignment:	Left Centered Right Justified
Text rotation:	
<u>A</u> nchor:	Top <input type="button" value="v"/>

WebReporting tip

- › CreateComObject is called on open report
- › When this fails it is too late to correct the situation and end-users can get an error 500
- › Better create the COM instance when webapp starts
- › Set peAutoCreate to acAutocreate in the cDRReport object

Future

- › Boxes over multiple sections
- › HTML text formatting
- › Multiple data series in charts

Thank you!

Are there any questions?