

The 'drawer'

Vincent Oorsprong

Topics

- › Workspace launcher vs Studio launcher
- › Relationships Checker
- › Database Snapshot
- › WebApp log viewer
- › DeepL translation
- › About & Sysinfo library

Workspace Launcher

Workspace Launcher

- › Developed by Arnold Franken
- › Extended version of the Studio Launcher
 - › Opening workspace main folder in windows explorer
 - › Starts Studio, Database Explorer, WebApp Administrator
 - › Integrates with JIRA and GIT
 - › Opening main JIRA page
 - › Opening GIT client
 - › WebApp URLs for Development, Test and Live servers

Workspace Launcher

- › Global settings
 - › JIRA Url
 - › GIT
 - › Git (lab) Url
 - › API Host
 - › Login name
 - › Personal token needed to get the merge request information
 - › Two GIT clients can be configured
 - › Program, command line, title, icon

Workspace Launcher

- › Add each workspace you want to use to the list of workspaces
- › Enter paths, URLs, Jira and GitLab references

Relationships Checker

Checking

- › Developed by Arnold Franken
- › Matching column type
- › Matching column size
- › Reports missing DD classes
- › Reports missing DDO objects in a component
- › Checks alias tables
- › Takes care if pbUseDDRelates

Database Snapshot

Compare

- › Developed by Arnold Franken
- › A database snapshot is a read-only, static view of a SQL Server database (the source database). The database snapshot is transactionally consistent with the source database as of the moment of the snapshot's creation. A database snapshot always resides on the same server instance as its source database
- › The tool is being able to compare current database (table) structure against a made snapshot of the database

WebApp Log Reader

WebApp Log viewer

- › DataFlex 20.1 comes with an API for reading webapp.log
- › Demo application included in Specialized Components workspace
 - › Select a webapp.log file
 - › Show contents of webapp.log from a running webapp
- › I created a more advanced viewer to test the API

WebApp Log Viewer

- › Enumerates the DataFlex versions in the registry
 - › Webapp's are registered in the registry under
HKEY_LOCAL_MACHINE\SOFTWARE\Data Access
Worldwide\DataFlex\<Version>\WebApp Server\Web
Applications
 - › Shows whether the web application is disabled or not



DeepL

What is this?

- › DeepL translator is a tool from a small German company
- › **The World's Best** Machine Translation
- › Maximum Data Integrity
 - › Delete after translation finished
 - › HTTPS
 - › Follows the EU GDPR rules
- › Document translation
- › REST API for Developers

Some quotes

Tech giants Google, Microsoft and Facebook are all applying the lessons of machine learning to translation, but a small company called DeepL has outdone them all and raised the bar for the field.

Its translation tool is just as quick as the outsized competition, but more accurate and nuanced than any we've tried.

TechCrunch, USA



Indeed, a few tests show that DeepL Translator offers better translations than Google Translate when it comes to Dutch to English and vice versa.

RTL Z, Netherlands



DeepL from Germany could surpass Google Translate
WIRED's quick test shows that DeepL's results are indeed in no way inferior to those of the high-ranking competitors and, in many cases, even surpass them. The translated texts often read much more fluently; where Google Translate forms completely meaningless word chains, DeepL can at least guess a connection.

WIRED.de, Germany



For Developers

- › There is a REST API
- › Free version up to 500,000 characters per month
- › You can use this for making your applications multi-lingual
- › Auto language detection
- › 29 source languages
- › 31 target languages
- › Glossaries (language pairs) for custom translations

Usage

- › We use DeepL in Halifax – the warranty portal software by Data Access – for instance translation of text strings entered by customers in their native language into the language of the employee
- › We used it for the Build your Studio Wizard library
 - › Translations there are stored in an SQLite database

The background of the slide is a repeating geometric pattern of blue lines that create a 3D effect of interlocking cubes or rectangular blocks. The pattern is centered and covers the entire area.

About & Sysinfo

First version

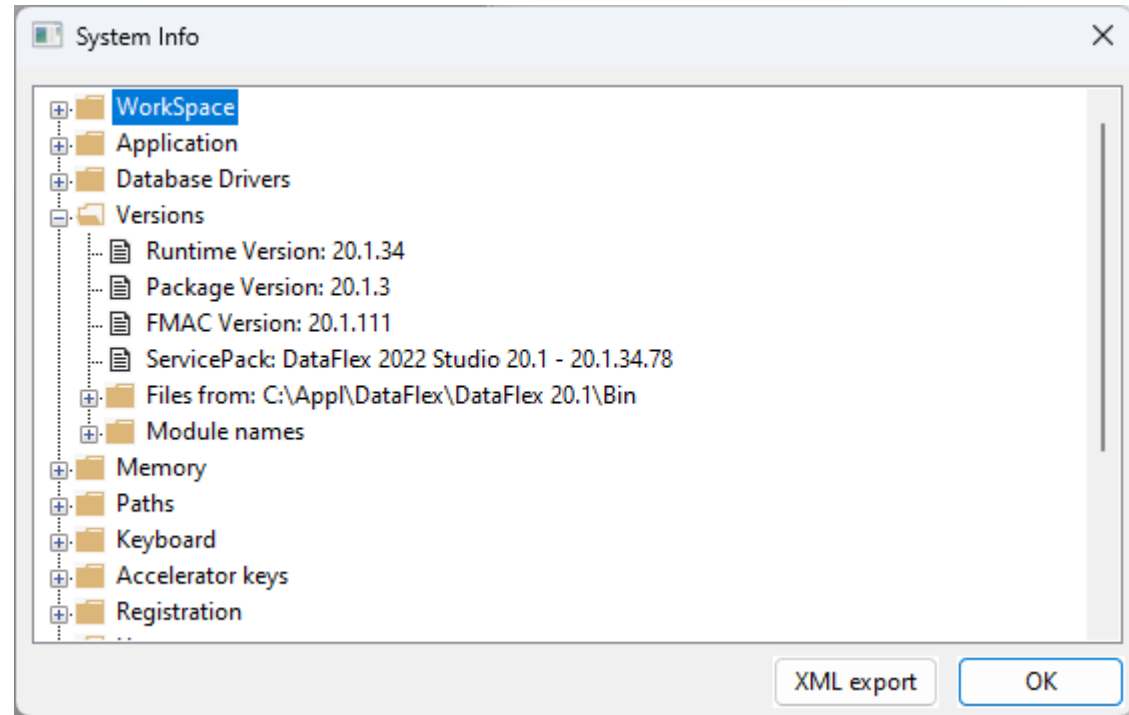
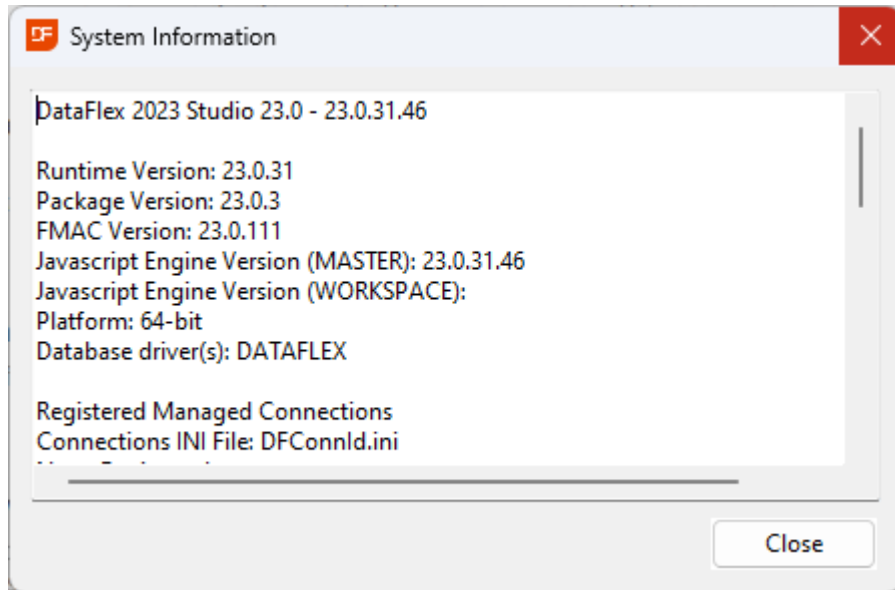
- › Back in 1996 I made an about and sysinfo dialog which got added to the product
- › It was OK but the information was limited

Enhanced versions

- › Adding more and more information in the sysinfo dialog made it look quite unorganized
- › Enhancement using a treeview was being developed
- › Was sitting on my machine for many years

New released version

- › UTF8 support
- › XML Export



Thank you!

Are there any questions?