

# DataFlex

## DATAFLEX STATUS & OVERVIEW

HARM WIBIER

DID YOU MIGRATE TO UNICODE  
YET?

- DataFlex became fully unicode
  - Support multiple languages (characters sets) in a single application
  - Converted the runtime to Unicode
    - Strings in DataFlex became UTF-8
    - WString was added for communicating with UTF-16 API's (like windows)
- 64-bit
  - Option to compile your application for 64-bit
  - Studio became 64-bit
- Warnings (already in 19.1) should help with migration!
- DataFlex 20.1 solved many stability issues



- Extended support of DataFlex 19.1 will end in 2026!
  - No more security updates from that point on!
- **Security Note**
  - DataFlex 19.1 and older WebApps do require proper application of redaction library to be secure!
  - Since DataFlex 20.0 this became part of the standard product

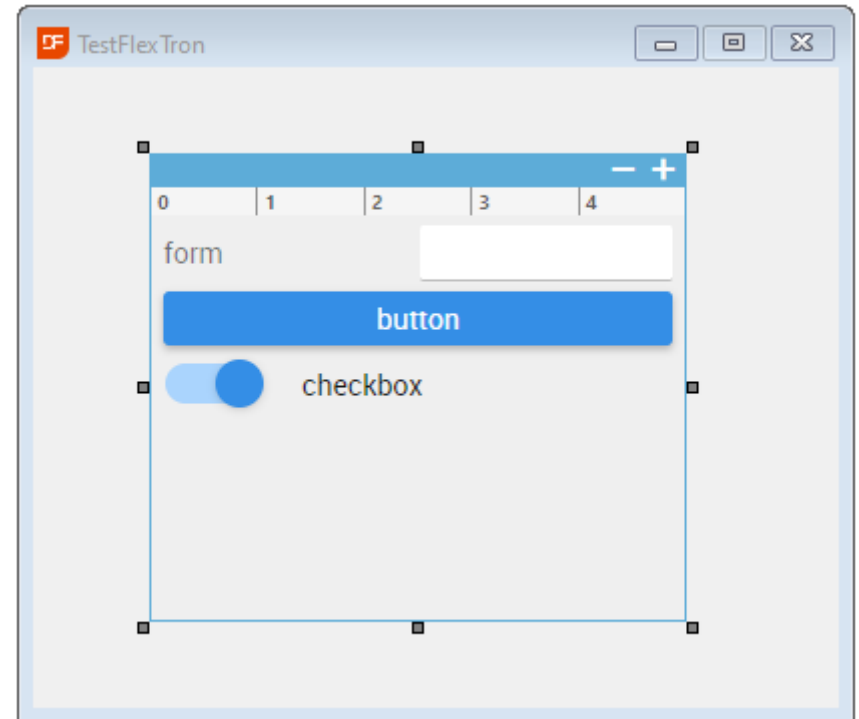
01

FLEXTRON

# FLEXTRON

## WHAT IS FLEXTRON?

- Mix web controls in your Windows Applications
- No WebApp Server required
  - Deploy like windows applications
- Share code with WebApps
- Designer support in the studio

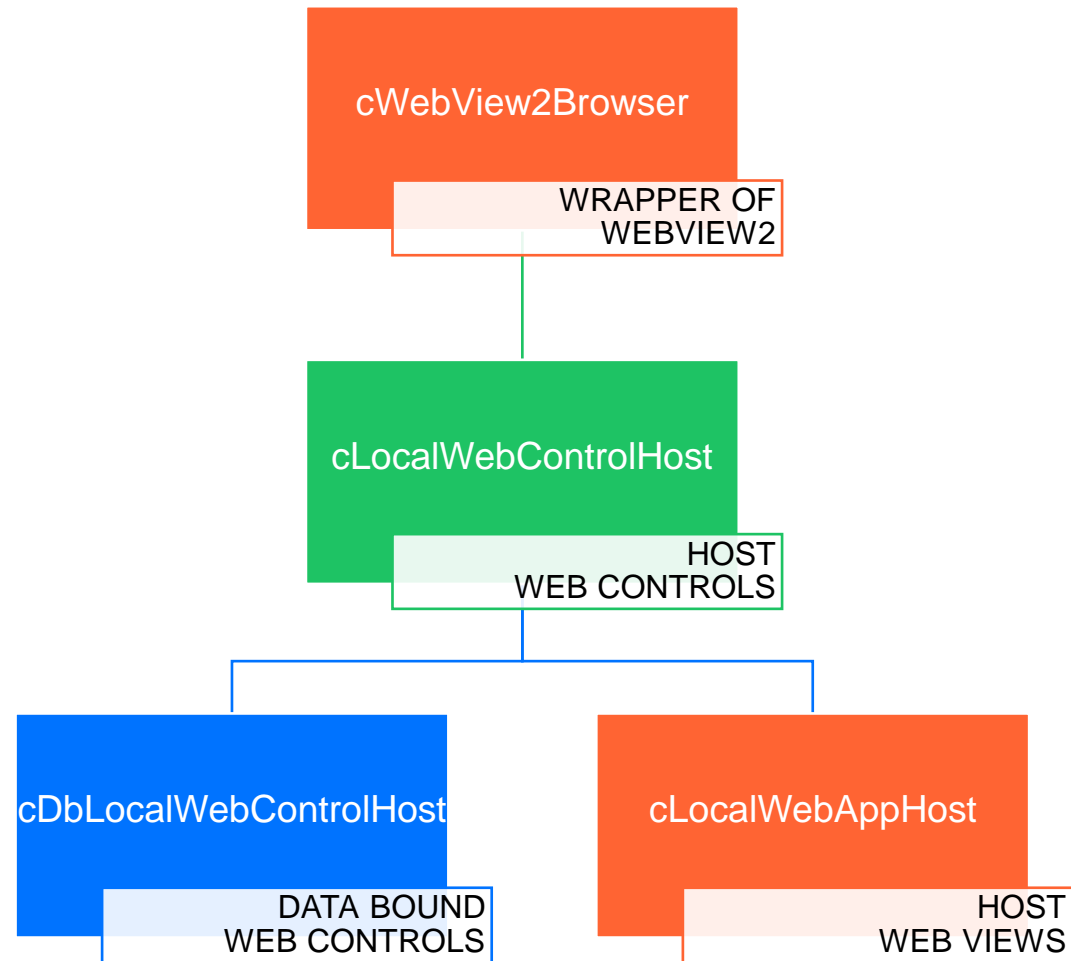


```
Object oWebHost is a cLocalWebControlHost
    Set Size to 282 368
    Set Location to 3 7
    Set peAnchors to anTopBottomLeft
    Set piColumnCount to 12

    Object oSample1FormInput is a cWebForm
        Set piColumnSpan to 10
        Set pbReadOnly to True
        Set pbShowLabel to False
    End_Object
End_Object
```

# FLEXTRON

## CLASS HIERARCHY





- **WebView2 is the basis for FlexTron**
  - Mix web technologies into Windows applications
    - Render HTML snippets
    - Run JavaScript
    - API's providing two-way communication
  - Build your own browser
  - Create fancy dashboards
- Replaces the Internet Explorer based COM WebBrowser



DID YOU KNOW ARGUMENT\_SIZE  
WAS REMOVED IN DATAFLEX 2022?

NO MORE ARGUMENT\_SIZE!  
DATAFLEX 2022

/\* HISTORIC ARTIFACT  
REMOVED \*/

- Argument\_Size was removed in DataFlex 2022
  - Runtime now dynamically manages central string buffers

▼ ⚠ ----Compiler Warning Summary----

└─ ⚠ Warning 4533: C:\Projects\DF\DataFlex 20.1\Examples\Order Entry\AppSrc\Order.src (ln 3) Obsolete Command SET\_ARGUMENT\_SIZE. It can be removed.

02

# COMPILER IMPROVEMENTS

## COMPILER IMPROVEMENTS

### MULTILINE STRING

- String constants that spans multiple lines
- Nicer syntax for embedding SQL, HTML, JSON
- No compiler substitutions
- Improved in DataFlex 2023 with aligned syntax

```
Object oWebHtmlBox1 is a cWebHtmlBox
  Set piColumnSpan to 0
  Set psHtml to """
    <ul>
      <li>Item 1</li>
      <li>Item 2</li>
    </ul>
  """
End_Object
```

## COMPILER IMPROVEMENTS

### MULTILINE COMMENTS

```
/*  
Field validation message that checks if the value contains a valid  
email address. It also allows empty values. An email address is  
considered valid if it contains an @ character and a .  
*/  
  
Function ValidateEmail Integer iColumn String sValue Returns Boolean
```

## COMPILER IMPROVEMENTS

### INCLUDE\_TEXT

- Include text files as constant at compile-time
- Maintain large SQL queries in separate files

```
Include_Text OrdersGroup.sql as C_SQLOrdersGroup  
Get SQLExecDirect of ghoSQLExecutor C_SQLOrdersGroup to aTheRows
```

03

# E-SQL SUPPORT



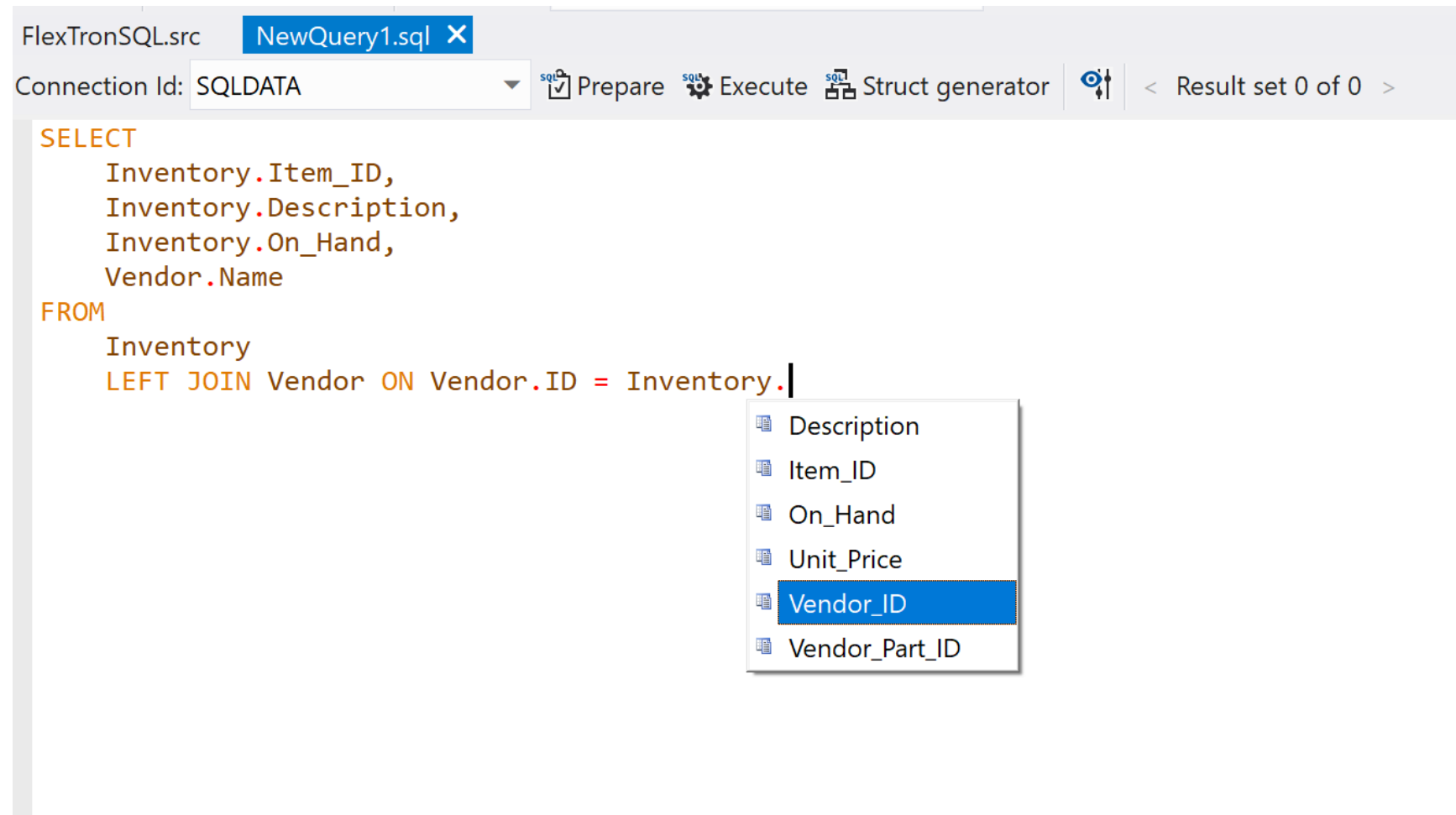
- Make embedded SQL feel as part of the product
- Increase recognizability
- Simplify code
- Add studio support
- Improve performance



- Single object for executing SQL statements
- Only configure the managed connection
- Resultset directly in native dataflex types
  - Variants
    - Converted to proper types
    - Works well with DataFlex Reports
  - Structs
    - Matched by column name
  - tWebRow, tDataSourceRow
    - Straight into cWebList or cCJGrid
- Named parameters

# E-SQL SUPPORT LANGUAGE & STUDIO FEATURES

- Studio features
  - Syntax Highlighting
  - Code Sense
  - Query Tester
- Language features
  - Multiline string
  - SQL String
  - Include\_Text



## E-SQL SUPPORT DEMO..

```
Object oSQLException is a cSQLException
  Set psConnectionId to "SQLDATA"
End_Object

Procedure StringArray
  String[][] aResults

  Get SQLExecDirect of oSQLException @SQL""
    SELECT
      Name,
      City,
      Zip
    FROM
      Customer
    "" to aResults
End_Procedure

Send StringArray
```



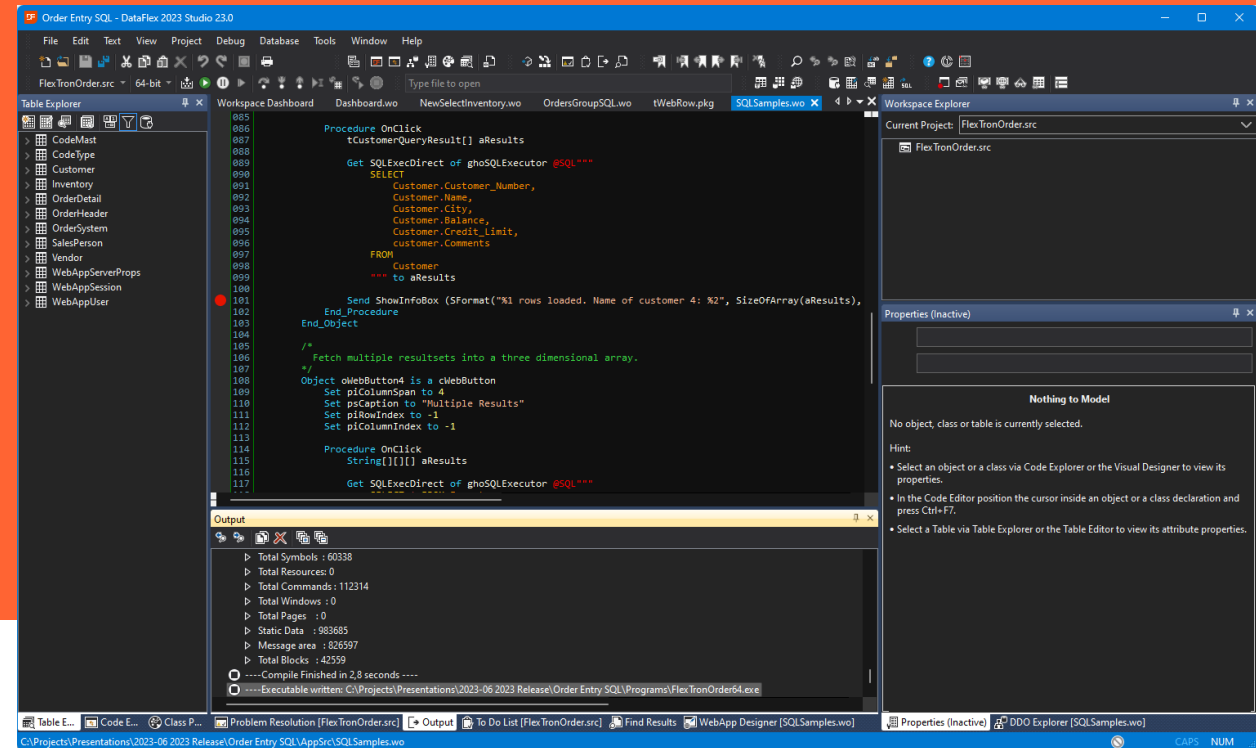
## E-SQL SUPPORT

### USE ITS POWER WISELY

- Not intended to be used for data entry
  - Use data dictionary with business rules!
  - If you are writing an INSERT or UPDATE statement you should reconsider!
- Best used for optimized loading of sets of data



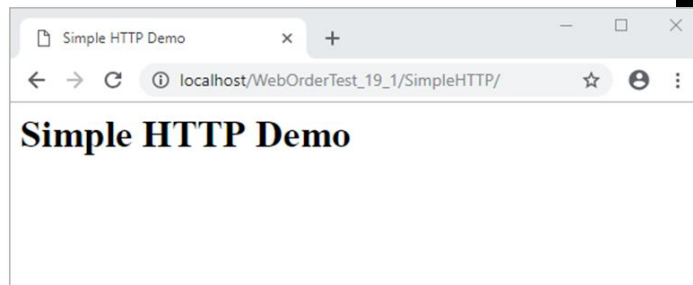
# WHO USES THE STUDIO DARK THEME?



04

# WEBAPP SERVER

- Full control over HTTP request handling
- Flexible URL handling
- Stream binary data in chunks
- Build powerful REST services



```
Use cWebHttpHandler.pkg
```

```
Object oSimpleHTTPHandler is a cWebHttpHandler
```

```
Set psPath to "SimpleHTTP"
```

```
Set psVerbs to "GET"
```

```
Procedure OnHttpGet String sPath String sAcceptType
```

```
Send AddHttpResponseHeader "Content-Type" "text/html"
```

```
Send OutputString ""
```

```
<html>
```

```
<head><title>Simple HTTP Demo</title></head>
```

```
<body>
```

```
<h1>Simple HTTP Demo</h1>
```

```
</body>
```

```
</html>
```

```
""
```

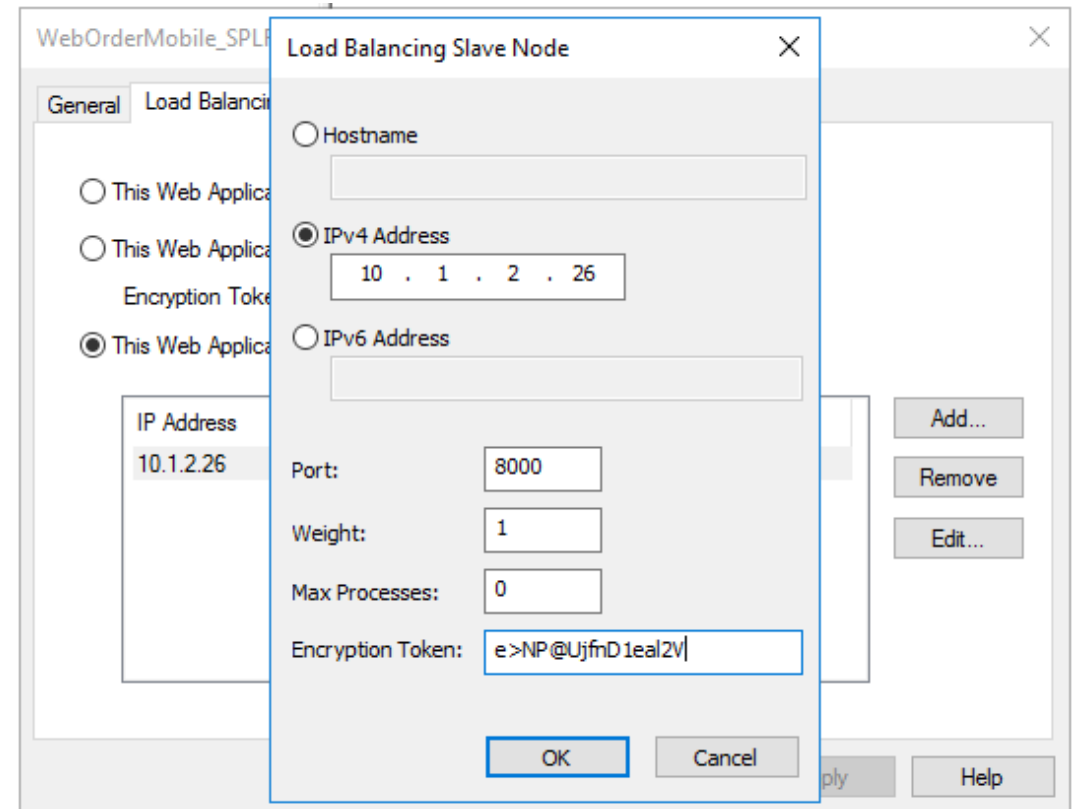
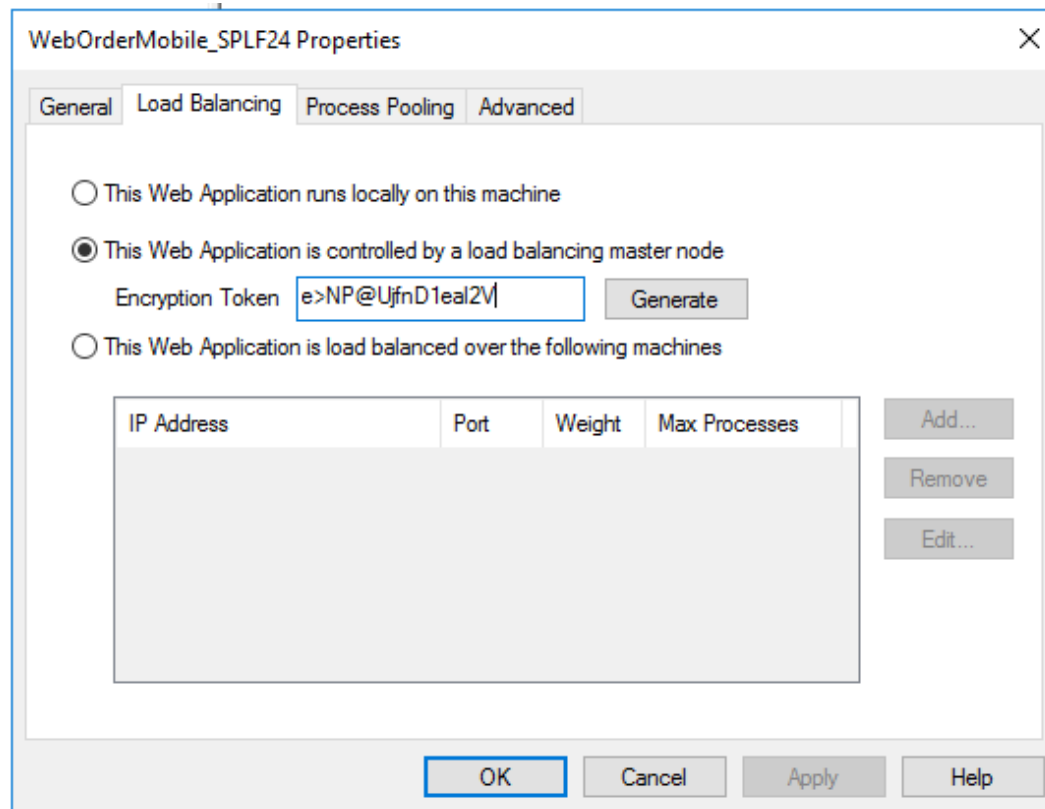
```
End_Procedure
```

```
End_Object
```



# WEBAPP SERVER SPLF ENCRYPTION

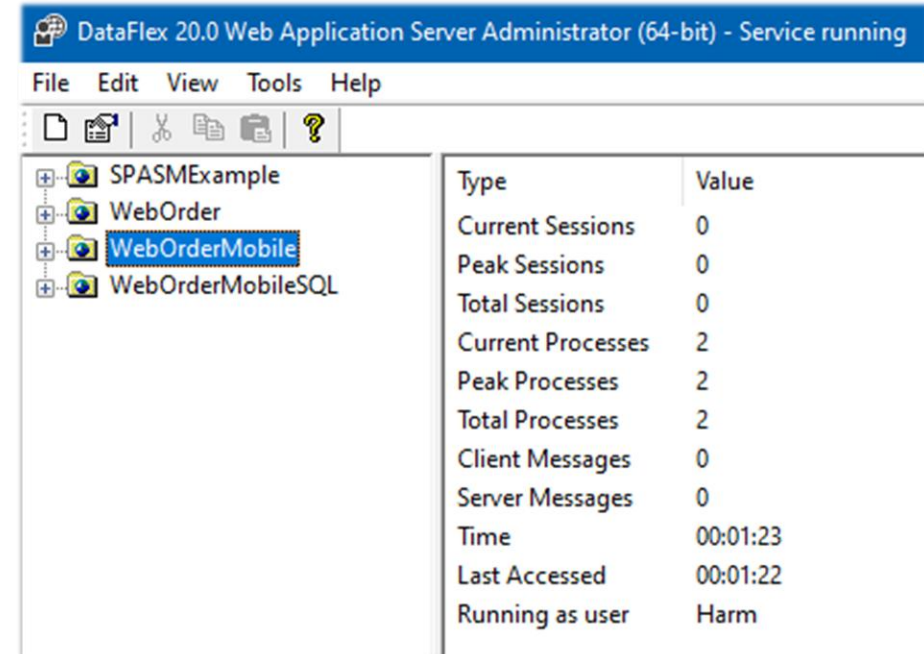
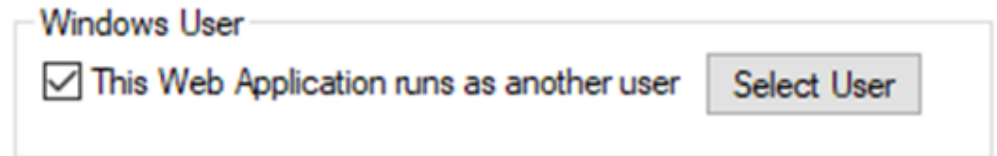
- Encrypted connection between master and application server
- Custom token for increased strenght



# WEBAPP SERVER

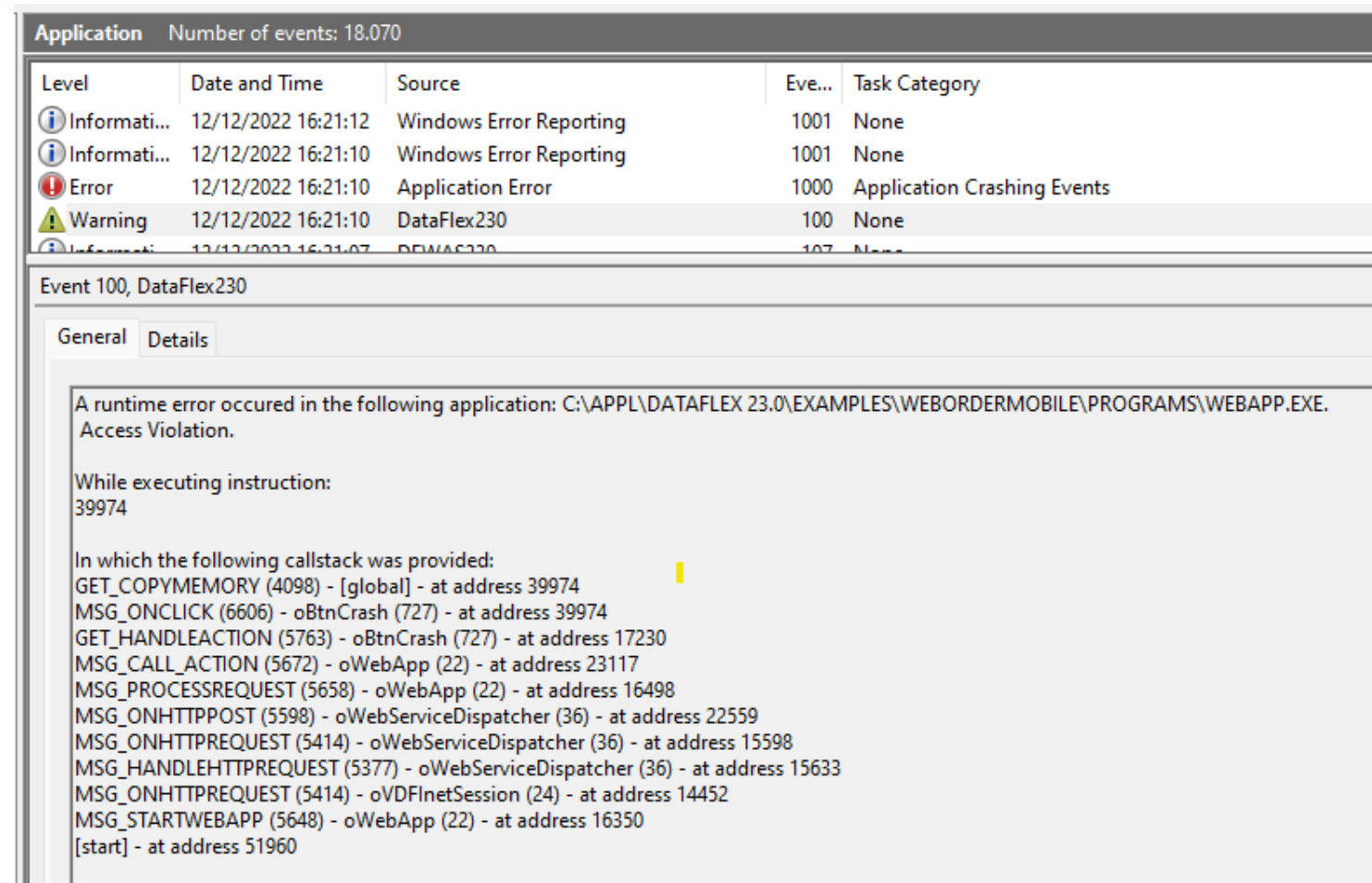
## CONFIGURE WINDOWS USER PER WEBAPP

- Run webapp.exe under a different windows user
- Configurable per webapp
- Password securely stored
- Better isolation on shared servers
- Access network



# WEBAPP SERVER CRASH DETAILS

- More details on server-side webapp crashes
- DataFlex callstack if possible



The screenshot shows the Windows Event Viewer interface. At the top, it says 'Application' and 'Number of events: 18,070'. Below this is a table of events. The event selected is 'Event 100, DataFlex230'. The 'General' tab is active, showing a runtime error (Access Violation) in the application 'C:\APPL\DATAFLEX 23.0\EXAMPLES\WEBORDERMOBILE\PROGRAMS\WEBAPP.EXE'. The error occurred while executing instruction 39974. A callstack is provided, starting from the application's start and going up to GET\_COPYMEMORY.

Level	Date and Time	Source	Eve...	Task Category
Information	12/12/2022 16:21:12	Windows Error Reporting	1001	None
Information	12/12/2022 16:21:10	Windows Error Reporting	1001	None
Error	12/12/2022 16:21:10	Application Error	1000	Application Crashing Events
Warning	12/12/2022 16:21:10	DataFlex230	100	None
Information	12/12/2022 16:21:07	DataFlex230	107	None

Event 100, DataFlex230

General Details

A runtime error occurred in the following application: C:\APPL\DATAFLEX 23.0\EXAMPLES\WEBORDERMOBILE\PROGRAMS\WEBAPP.EXE. Access Violation.

While executing instruction:  
39974

In which the following callstack was provided:

- GET\_COPYMEMORY (4098) - [global] - at address 39974
- MSG\_ONCLICK (6606) - oBtnCrash (727) - at address 39974
- GET\_HANDLEACTION (5763) - oBtnCrash (727) - at address 17230
- MSG\_CALL\_ACTION (5672) - oWebApp (22) - at address 23117
- MSG\_PROCESSREQUEST (5658) - oWebApp (22) - at address 16498
- MSG\_ONHTTPPOST (5598) - oWebServiceDispatcher (36) - at address 22559
- MSG\_ONHTTPREQUEST (5414) - oWebServiceDispatcher (36) - at address 15598
- MSG\_HANDLEHTTPREQUEST (5377) - oWebServiceDispatcher (36) - at address 15633
- MSG\_ONHTTPREQUEST (5414) - oVDFInetSession (24) - at address 14452
- MSG\_STARTWEBAPP (5648) - oWebApp (22) - at address 16350
- [start] - at address 51960

## WEBAPP SERVER STATISTICS & SMARTER POOL SIZING

- New statistics in the administrator
- Smarter pool resize
- Smarter process connect logic
- Maximum concurrent settings per webapp

Type	Value
Current Sessions	0
Peak Sessions	1
Total Sessions	2
Current Processes	2
Peak Processes	2
Total Processes	4
Current Load	0%
Peak Load	0%
Client Messages	21
Server Messages	16
Average Queue Time	0 ms
Max Queue Time	0 ms
Average Queue Size	0
Max Queue Size	0
Average Process Start Time	536 ms
Max Process Start Time	620 ms
Average Response Time	31 ms
Max Response Time	46 ms
Time	01:49:28
Last Accessed	00:00:01
Running as user	Default (SYSTEM)

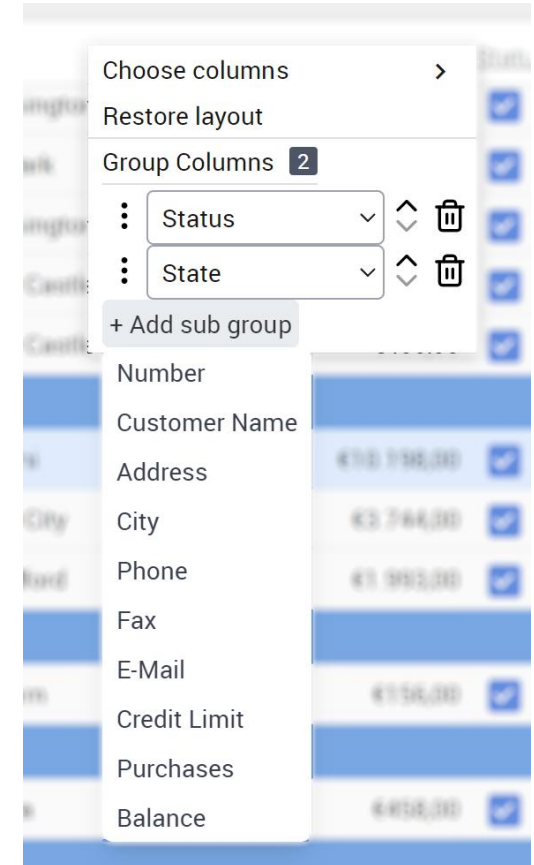
05

WEB UI

## WEB UI

### WEBLIST EXTENSIONS

- Customizable layout
  - Rearrange and hide columns
- Footer row
  - Add totals to your list
- Grouping
  - Automatic or custom defined groups
- HTML List
  - HTML box with list capabilities
- Multi select list
  - Subclass with multi select capability



- Introduced in DataFlex 2023, many refinements in DataFlex 2024
- Provides new options for creating layouts
- Switch between flow and grid layout

Customer Maintenance

Customer Num:  New

ADDRESS BALANCES COMMENTS

Street Address:


City / State / Zip:


Phone Number:  Fax:


E-Mail Address:

☒ Active Customer

✖ Delete <oCustomer>

 Convert <oCustomer> to Grid layout

 Refresh

 Open Developer Tools

WebApp Designer [ZoomCustomer.wo]

Customer #  New  Name  ☒ Active Customer

Address

Street

City

State

Zip

Phone

Balances

Credit Limit

Purchases

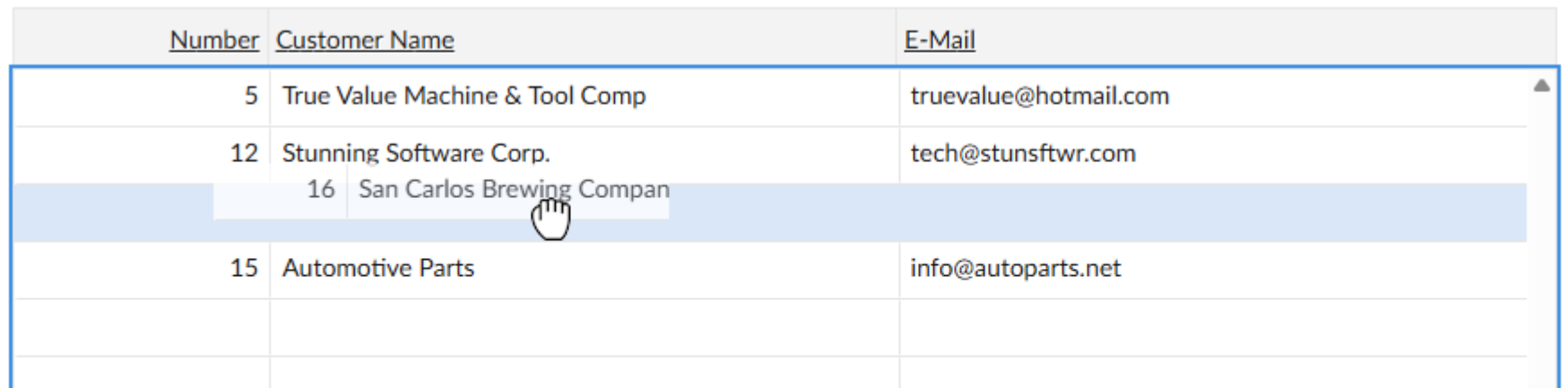
Balance Due

Comments

## WEB UI

### DRAW 'N DROP

- Single object to control operation
- Drag elements within your application
  - List Rows
  - Treeview Items
  - Tags
  - Files (from outside the browser)
- Drop on
  - Controls
  - Positions within Lists, Treeviews & TagsForms



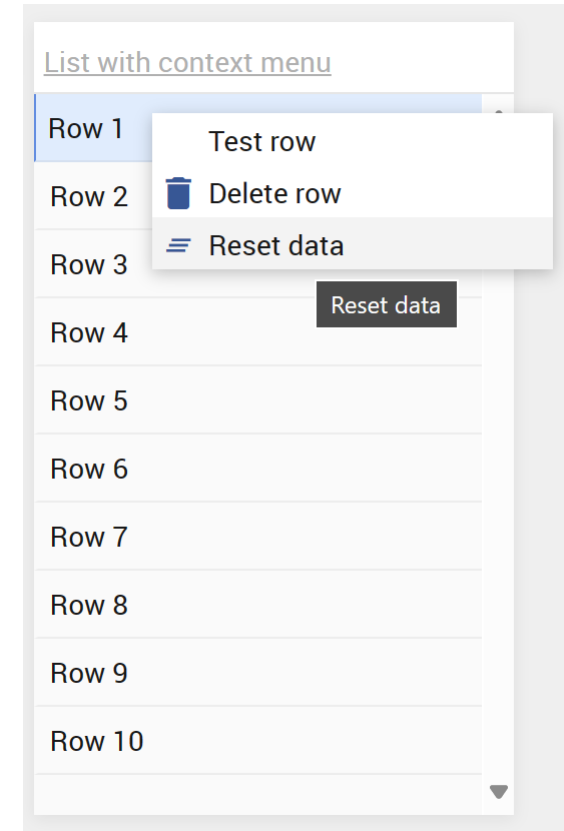
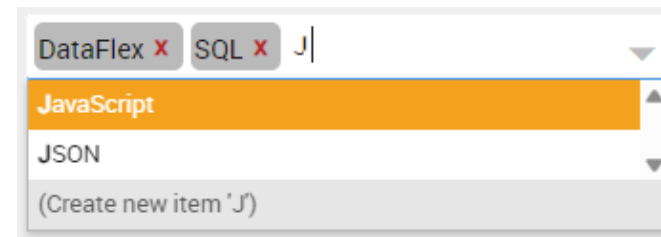
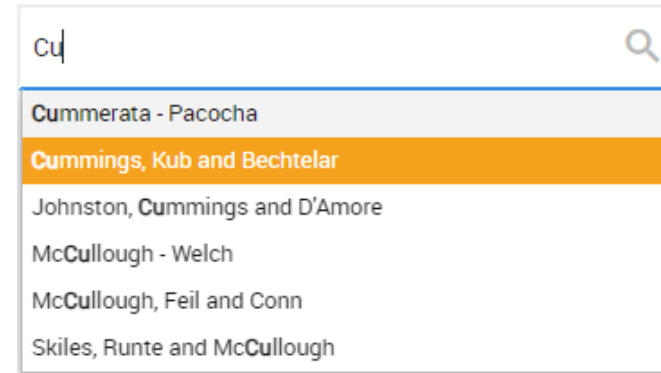
<u>Number</u>	<u>Customer Name</u>	<u>E-Mail</u>
5	True Value Machine & Tool Comp	truevalue@hotmail.com
12	Stunning Software Corp.	tech@stunsftwr.com
16	San Carlos Brewing Compan	
15	Automotive Parts	info@autoparts.net



# WEB UI

## WEB CONTROLS

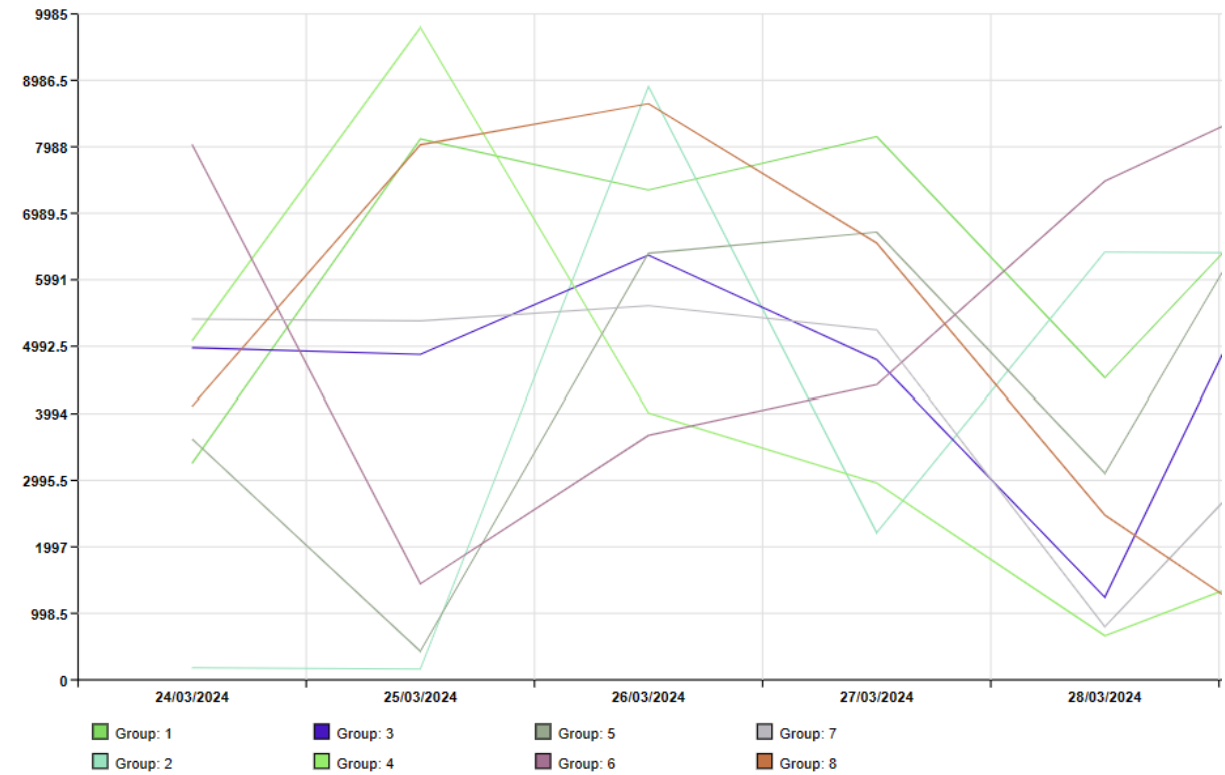
- cWebTagsForm
- cWebSuggestionForm
- cWebContextMenu
  - Use cWebMenuItem or OnDefineMenu
  - Attach to:
    - Controls
    - Browser window
    - List row
    - Tree item
    - Tags



# WEB UI

## VECTOR DRAWINGS

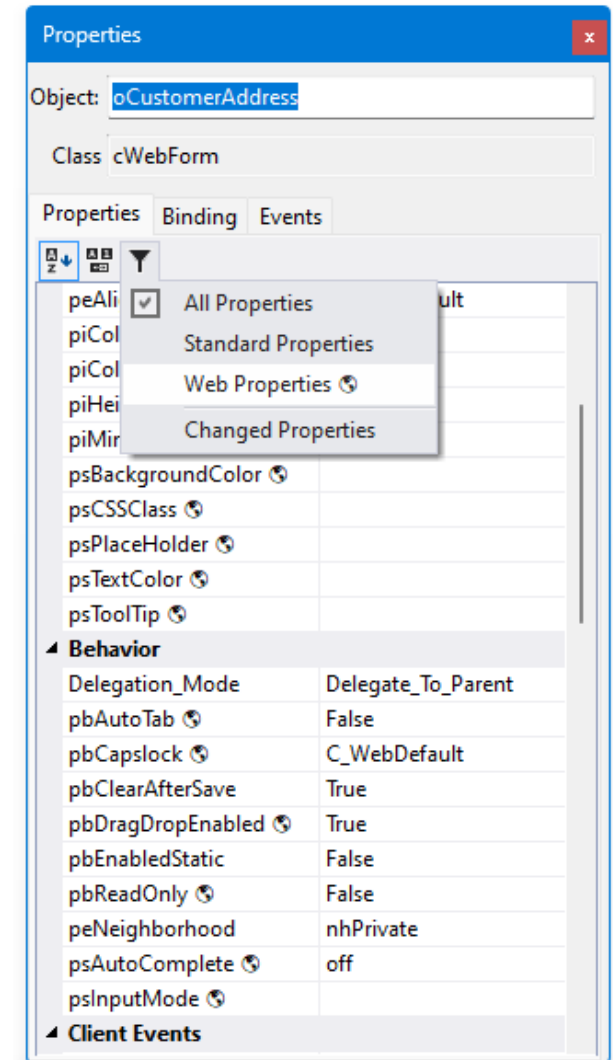
- Create vector drawings from DataFlex code
- User can scale, zoom & pan
- Draw maps, charts, games



## WEB UI

### WEB PROPERTIES IN THE STUDIO

- Filter on web / Windows / changed properties
- Categorized web properties
- Marker indicating web properties



## WEB UI

### DYNAMIC WEB OBJECTS

- Handles dynamic object creation for WebApps
  - Solves the difficulties caused by process pooling
- Use regular webapp API's
  - Work with real object handles
- Support for static child objects since 2024
- Composite class will make this easier with DataFlex 2025

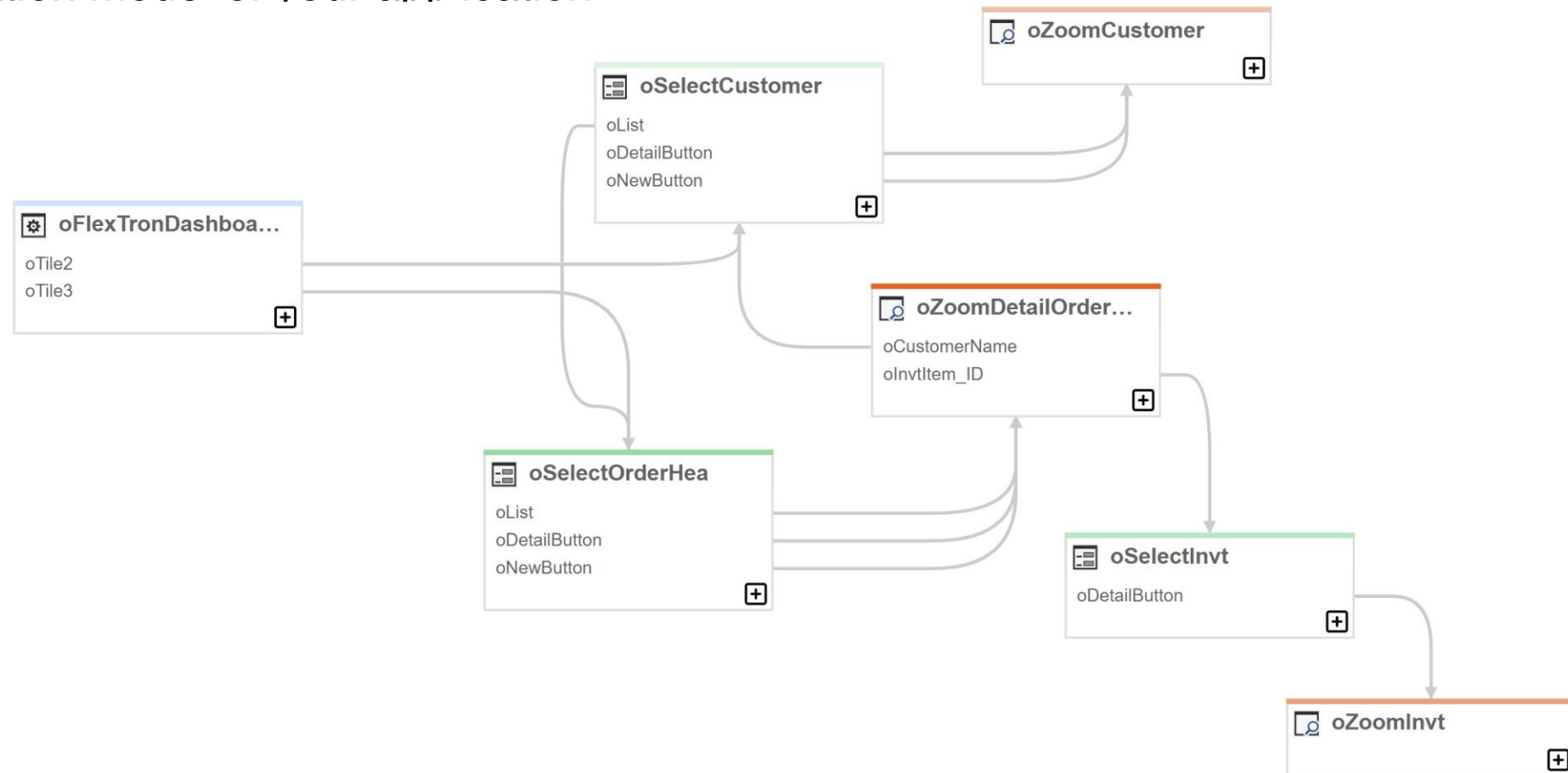
06

DATAFLEX 2025

# DATAFLEX 2025

## NAVIGATION DESIGNER

- Generate fully functioning drill-down applications without writing code
- Visualize the navigation model of your application



- Visualize your navigation model (also for existing projects)
- Generate views by dragging them from the class palette
- Create navigations by drawing lines between the views
- Configure navigations using the properties panel
- Open web views in full designer mode
- Remove navigations when removing / deleting views

- Combines nesting syntax of objects with reusability of classes
  - Compose with object syntax
  - Instantiate as a class
- Works elegantly with the dynamic object container
- Full studio support



```
Composite cActionGroup is a cWebGroup
  Set psCaption to "Do something!"

  Property String psMessage "Hello world!"

  Object oDescription is a cWebLabel
    Set psCaption to "This button shows a message box!"
  End_Object

  Object oButton is a cWebButton
    Set psCaption to "Click me!"

    Procedure OnClick
      String sText

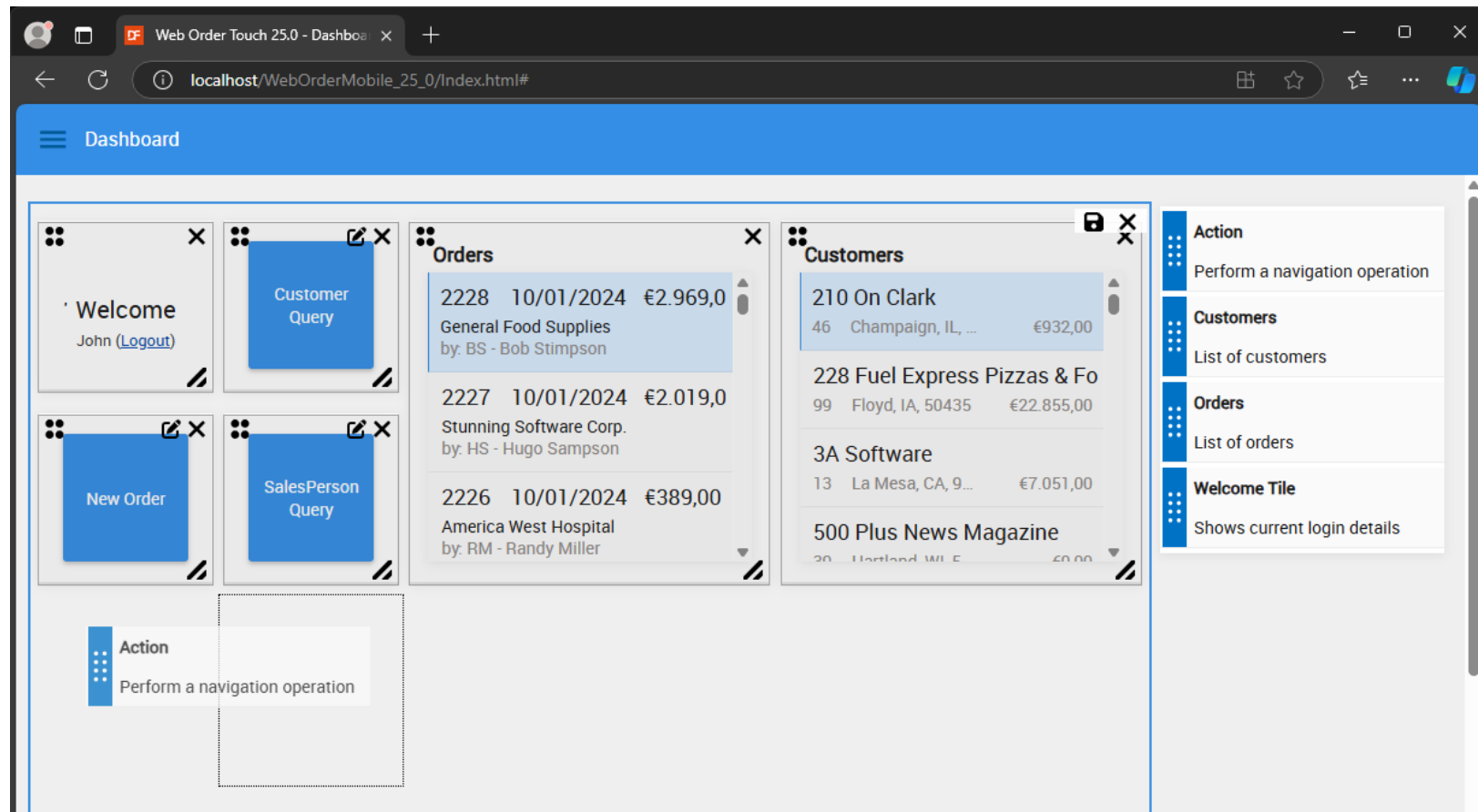
      Get psMessage to sText

      Send ShowInfoBox sText
    End_Procedure
  End_Object
End_Composite
```

```
Object oGrpButton is a cActionGroup
  Set psMessage to "DataFlex 2025!"
End_Object
```

```
Handle hoGroup
Get Create (RefClass(cActionGroup)) to hoGroup
Set psMessage of hoGroup to "DataFlex 2025"
```

- Framework for building customizable dashboards
- Design dashboard using drag 'n drop
- Build your own widgets
- Uses
  - New Composite
  - Dynamic Objects
  - Drag 'n drop API
  - Grid layout



- Modernized & Standardized code
- Improved readability and less error prone
- Utilize codesense of modern editors
- Uses
  - ES6 classes
  - Import



- Use CSS Variables to customize standard themes
- Set variables from custom CSS
- All styler options are available

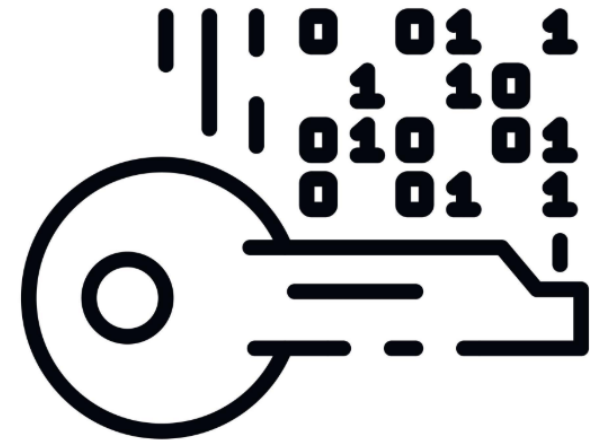
```
:root{  
  --df-MainDark: #567d2e;  
  --df-MainRegular: #7CB342;  
  --df-MainMedium: #89ba54;  
  --df-MainLight: #a3c97a;  
  --df-MainLight2: #cae0b3;  
  --df-MainLight3: #e4efd9;  
  --df-MainLight4: #f1f7ec;  
}
```

- Regular expressions engine in the runtime
- Based on PCRE2 library
  - Perl Compatible Regular Expressions
  - Most popular implementation
- Single class implementation
  - Configure expression using properties
  - Stores compiled expression
    - Compiled on first usage
  - Several Match, Substitute and Split methods



```
Object oDataSeparator is a cRegex  
    Set psExpression to "[^;,\t ]+"  
End_Object  
  
String[] aValues  
Get MatchAll of oDataSeparator "John, 2012/06/21, 90kg, Designer" to aValues
```

- cWebSessionManagerStandard now performs password hashing
- cPasswordHasher class encapsulates the logic
- Hashes are stored with a version to support updates of the algorithm
- New projects will have hashed passwords by default
- WebOrder & WebOrderMobile now also use hashed passwords
- Uses PBKDF2 algorithm supported by FIPS and NIST



- Increase the size of WebAppUser.Password to 128
- Encrypt existing passwords using cPasswordHasher
  - Use business process form the [Standard Password Hashing](#) help page
- Or turn off hashing by setting pbPasswordHashing to false



## DATAFLEX 2025 WHEN?

- Release scheduled for **next week!**

# DataFlex

**THANK YOU FOR  
YOUR TIME!**