

# Dynamic Dashboards

Johan Broddfelt

# We would like a dashboard

## Alla

Nya medlemmar 137 24: 145 23: 166	Nya till besökare % 11.7 24: 15.1 23: 9.9	Nya besökare 29 24: 25 23: 32	Unika besökare 613 24: 522 23: 514	Reserver % 13 24: 10 23: 4	Besök 2000 24: 1331 23: 1260	Nya arrangörer 4.5 24: 3.5 23: 3.5	Arrangörer 106 24: 91 23: 97	Arrangörer % 17.3 24: 17.4 23: 18.9	Aktiviteter 236 24: 188 23: 158	Kommande 164 24: 86 23: 94	Plusmedlemskap 560 24: 539 23: 603	Besökare/Event 8.5 24: 7.1 23: 8	Event/Arrangör 2.23 24: 2.07 23: 1.63
Nya medlemmar 137 Mar: 226 Feb: 185	Nya till besökare % 18.1 Mar: 24.3 Feb: 21.2	Nya besökare 29 Mar: 52 Feb: 51	Unika besökare 613 Mar: 689 Feb: 695	Reserver % 13 Mar: 8 Feb: 9	Besök 2000 Mar: 2146 Feb: 2270	Nya arrangörer 4.5 Mar: 4 Feb: 3.25	Arrangörer 106 Mar: 127 Feb: 107	Arrangörer % 17.3 Mar: 18.4 Feb: 15.4	Aktiviteter 236 Mar: 241 Feb: 194	Kommande 164 Mar: 137 Feb: 120	Plusmedlemskap 560 Mar: 544 Feb: 571	Besökare/Event 8.5 Mar: 8.9 Feb: 11.7	Event/Arrangör 2.23 Mar: 1.9 Feb: 1.81

## Malmö

Nya medlemmar 25 24: 32 23: 44	Nya till besökare % 6.3 24: 11.4 23: 19	Nya besökare 5 24: 4 23: 9	Unika besökare 176 24: 177 23: 184	Reserver % 16 24: 6 23: 5	Besök 641 24: 495 23: 524	Nya arrangörer 0.75 24: 1 23: 1	Arrangörer 34 24: 34 23: 38	Arrangörer % 19.3 24: 19.2 23: 20.7	Aktiviteter 63 24: 72 23: 54	Kommande 37 24: 29 23: 27	Plusmedlemskap 278 24: 263 23: 297	Besökare/Event 10.2 24: 6.9 23: 9.7	Event/Arrangör 1.85 24: 2.12 23: 1.42
Nya medlemmar 25 Mar: 32 Feb: 34	Nya till besökare % 21.9 Mar: 23.5 Feb: 21.1	Nya besökare 5 Mar: 12 Feb: 7	Unika besökare 176 Mar: 196 Feb: 184	Reserver % 16 Mar: 7 Feb: 8	Besök 641 Mar: 719 Feb: 587	Nya arrangörer 0.75 Mar: 0.5 Feb: 0.25	Arrangörer 34 Mar: 39 Feb: 28	Arrangörer % 19.3 Mar: 19.9 Feb: 15.2	Aktiviteter 63 Mar: 70 Feb: 46	Kommande 37 Mar: 32 Feb: 28	Plusmedlemskap 278 Mar: 276 Feb: 277	Besökare/Event 10.2 Mar: 10.3 Feb: 12.8	Event/Arrangör 1.85 Mar: 1.79 Feb: 1.64

## Göteborg

Nya medlemmar 20 24: 42 23: 27	Nya till besökare % 11.9 24: 33.3 23: 0	Nya besökare 5 24: 7 23: 11	Unika besökare 133 24: 136 23: 136	Reserver % 12 24: 10 23: 5	Besök 366 24: 344 23: 306	Nya arrangörer 1 24: 0.75 23: 1	Arrangörer 28 24: 25 23: 24	Arrangörer % 21.1 24: 18.4 23: 17.6	Aktiviteter 50 24: 41 23: 45	Kommande 54 24: 28 23: 23	Plusmedlemskap 79 24: 90 23: 128	Besökare/Event 7.3 24: 8.4 23: 6.8	Event/Arrangör 1.79 24: 1.64 23: 1.88
Nya medlemmar 20 Mar: 32 Feb: 21	Nya till besökare % 21.9 Mar: 33.3 Feb: 7.4	Nya besökare 5 Mar: 7 Feb: 7	Unika besökare 133 Mar: 133 Feb: 137	Reserver % 12 Mar: 11 Feb: 14	Besök 366 Mar: 374 Feb: 375	Nya arrangörer 1 Mar: 1 Feb: 0.25	Arrangörer 28 Mar: 32 Feb: 28	Arrangörer % 21.1 Mar: 24.1 Feb: 20.4	Aktiviteter 50 Mar: 46 Feb: 39	Kommande 54 Mar: 32 Feb: 28	Plusmedlemskap 79 Mar: 79 Feb: 84	Besökare/Event 7.3 Mar: 8.1 Feb: 9.6	Event/Arrangör 1.79 Mar: 1.44 Feb: 1.39

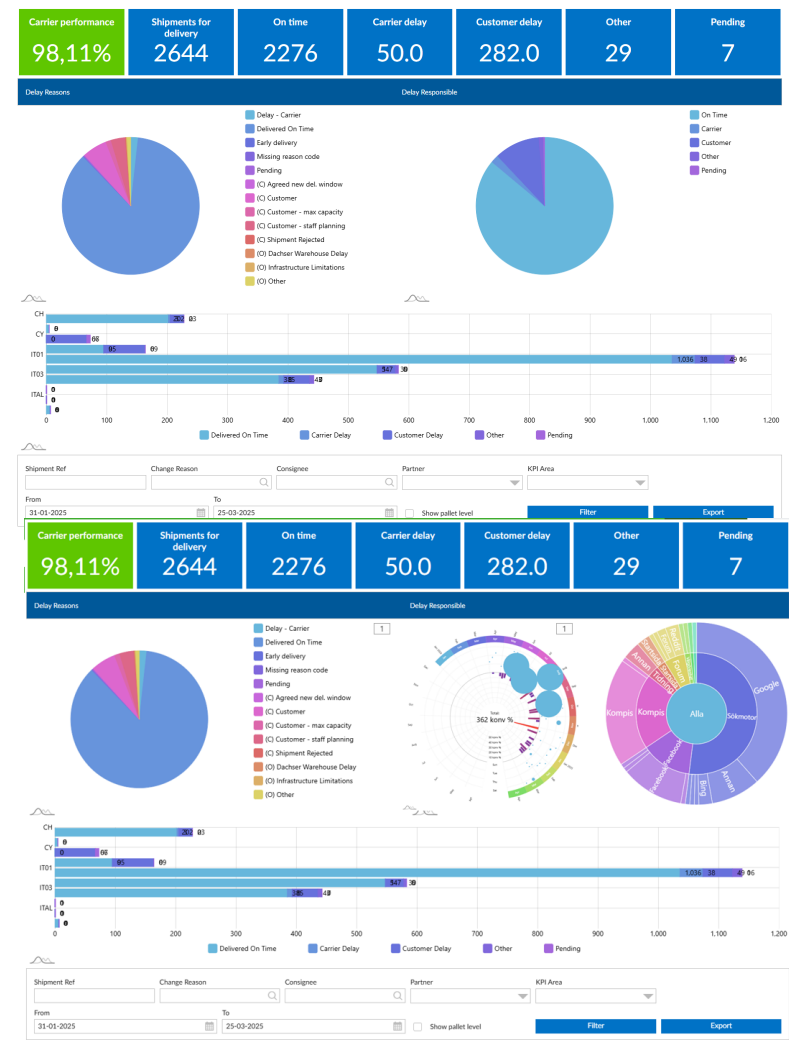
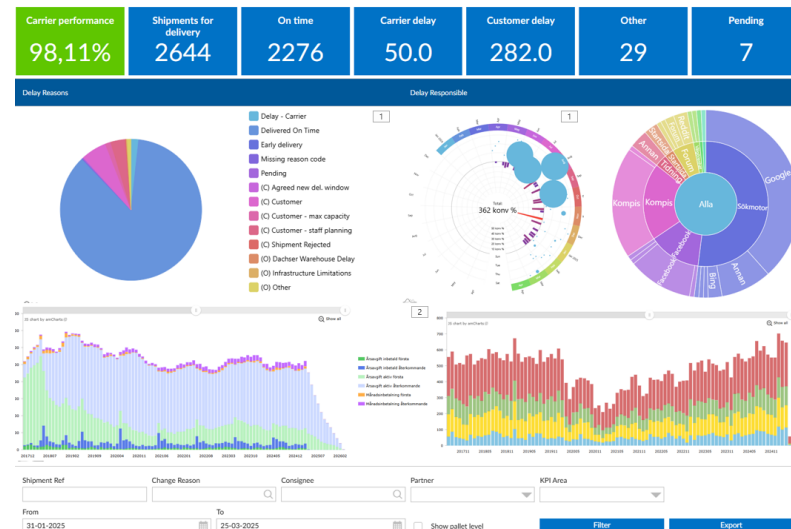
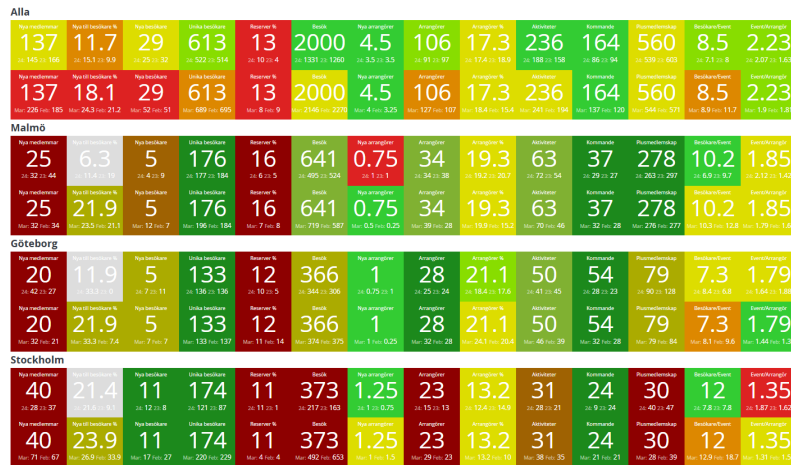
## Stockholm

Nya medlemmar 40 24: 28 23: 37	Nya till besökare % 21.4 24: 21.6 23: 9.1	Nya besökare 11 24: 12 23: 8	Unika besökare 174 24: 121 23: 87	Reserver % 11 24: 11 23: 1	Besök 373 24: 217 23: 163	Nya arrangörer 1.25 24: 1 23: 0.75	Arrangörer 23 24: 15 23: 13	Arrangörer % 13.2 24: 12.4 23: 14.9	Aktiviteter 31 24: 28 23: 21	Kommande 24 24: 9 23: 24	Plusmedlemskap 30 24: 40 23: 47	Besökare/Event 12 24: 7.8 23: 7.8	Event/Arrangör 1.35 24: 1.87 23: 1.62
Nya medlemmar 40 Mar: 71 Feb: 67	Nya till besökare % 23.9 Mar: 26.9 Feb: 33.9	Nya besökare 11 Mar: 17 Feb: 27	Unika besökare 174 Mar: 220 Feb: 229	Reserver % 11 Mar: 4 Feb: 4	Besök 373 Mar: 492 Feb: 653	Nya arrangörer 1.25 Mar: 1 Feb: 1.5	Arrangörer 23 Mar: 29 Feb: 23	Arrangörer % 13.2 Mar: 13.2 Feb: 10	Aktiviteter 31 Mar: 38 Feb: 35	Kommande 24 Mar: 21 Feb: 21	Plusmedlemskap 30 Mar: 28 Feb: 39	Besökare/Event 12 Mar: 12.9 Feb: 18.7	Event/Arrangör 1.35 Mar: 1.31 Feb: 1.52

Empowered  
Engaged  
Delighted  
Satisfied

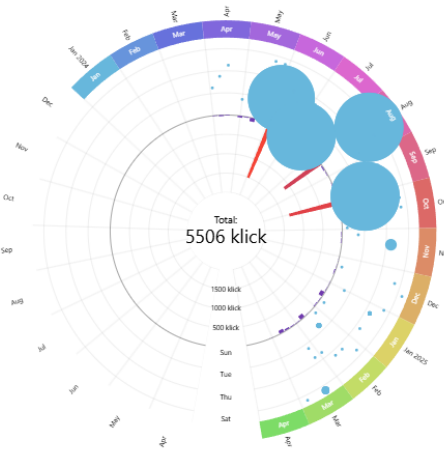
Shipment Ref	Change Reason	Consignee	Partner	KPI Area
<input type="text"/>	<input type="text"/>	<input type="text"/>	<input type="text"/>	<input type="text"/>
From	To	<input type="checkbox"/> Show pallet level		
<input type="text"/>	<input type="text"/>			
		<input type="button" value="Filter"/> <input type="button" value="Export"/>		

# Multiple dashboards

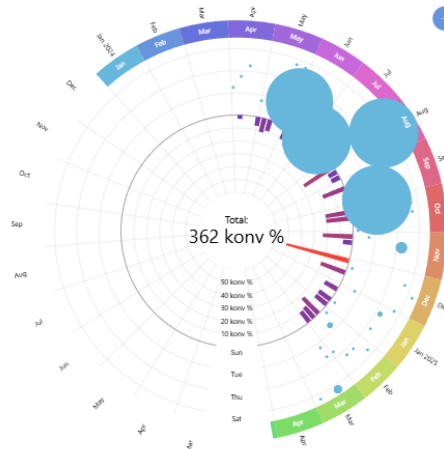


# Same widget with different data

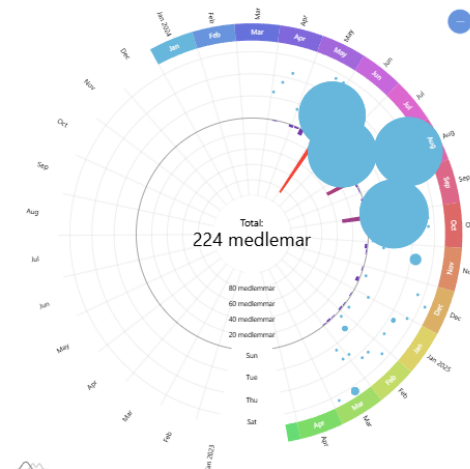
Klick per post



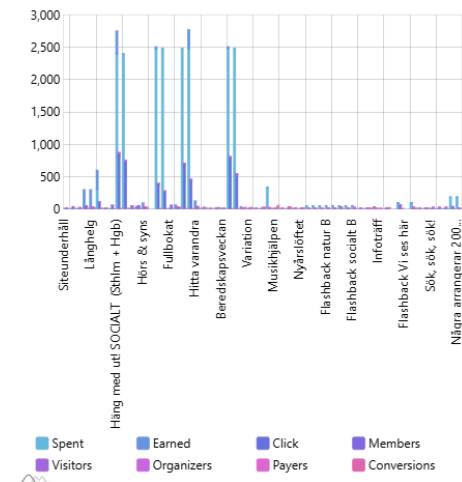
Registreringar per klick (%)



Registreringar per post



Annonseffekt



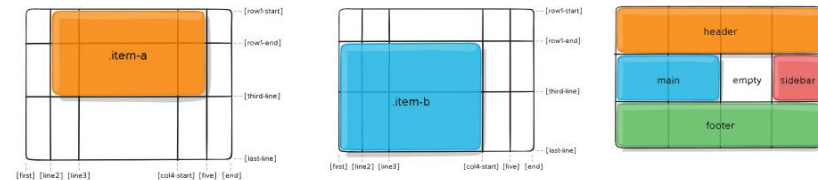
Spent  
Visitors  
Earned  
Organizers  
Click  
Payers  
Members  
Conversions



**New fancy widget thing**

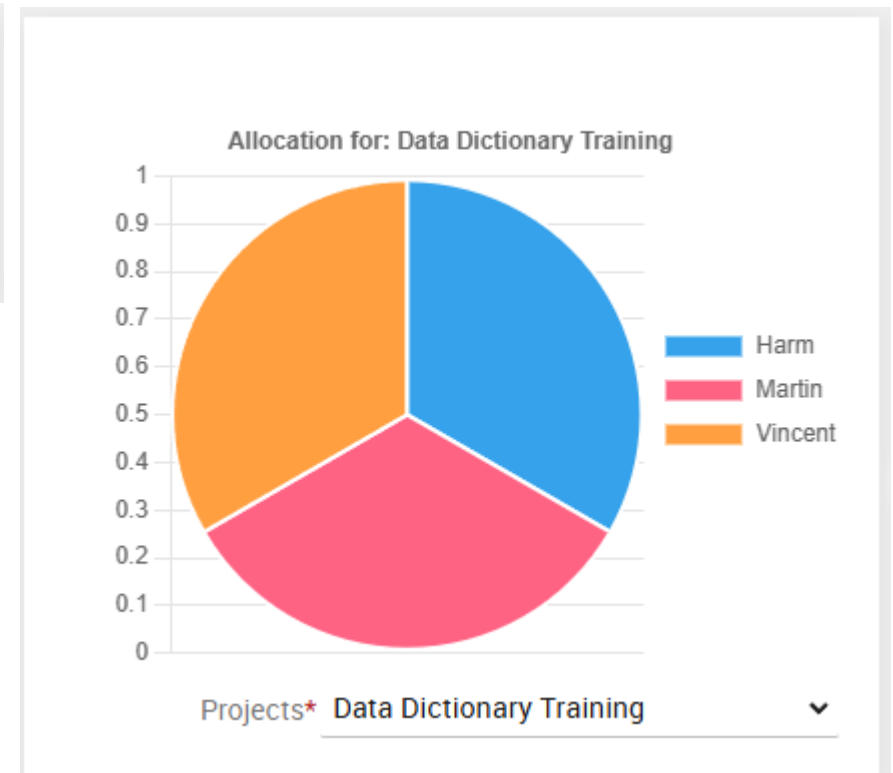
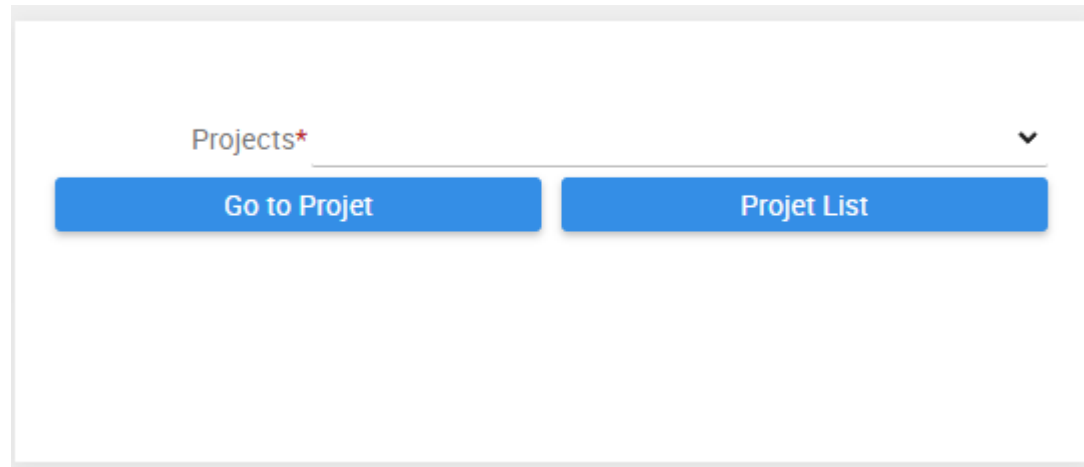
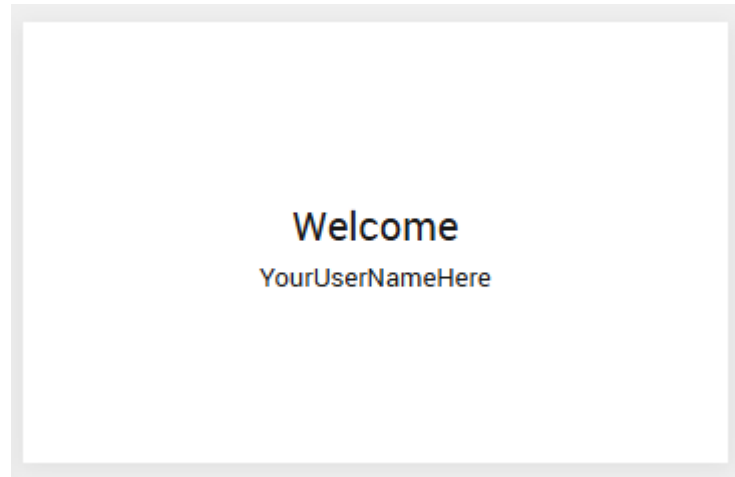
# 5 years in the making

- › DF 20 WebDynamicObjectContainer
  - › Dynamic creation and deletion of Web Controls at runtime
- › DF 2022 Drag & Drop
  - › Mark drag sources and drop targets
- › DF 23 Grid Layout
  - › Alternative to flow layout
- › DF 25 Composite classes
  - › View in a box
  - › Write classes like they are objects



```
01 Use cWebWidget.pkg
02
03 Composite cMyFirstWidget is a cWebWidget
04
05     // Properties, Events, Objects, DDO's all go here!
06
07 End_Composite
08
```

# What is a Widget



# What's a Widget

Composite (Special type of object)

Self contained DD structure

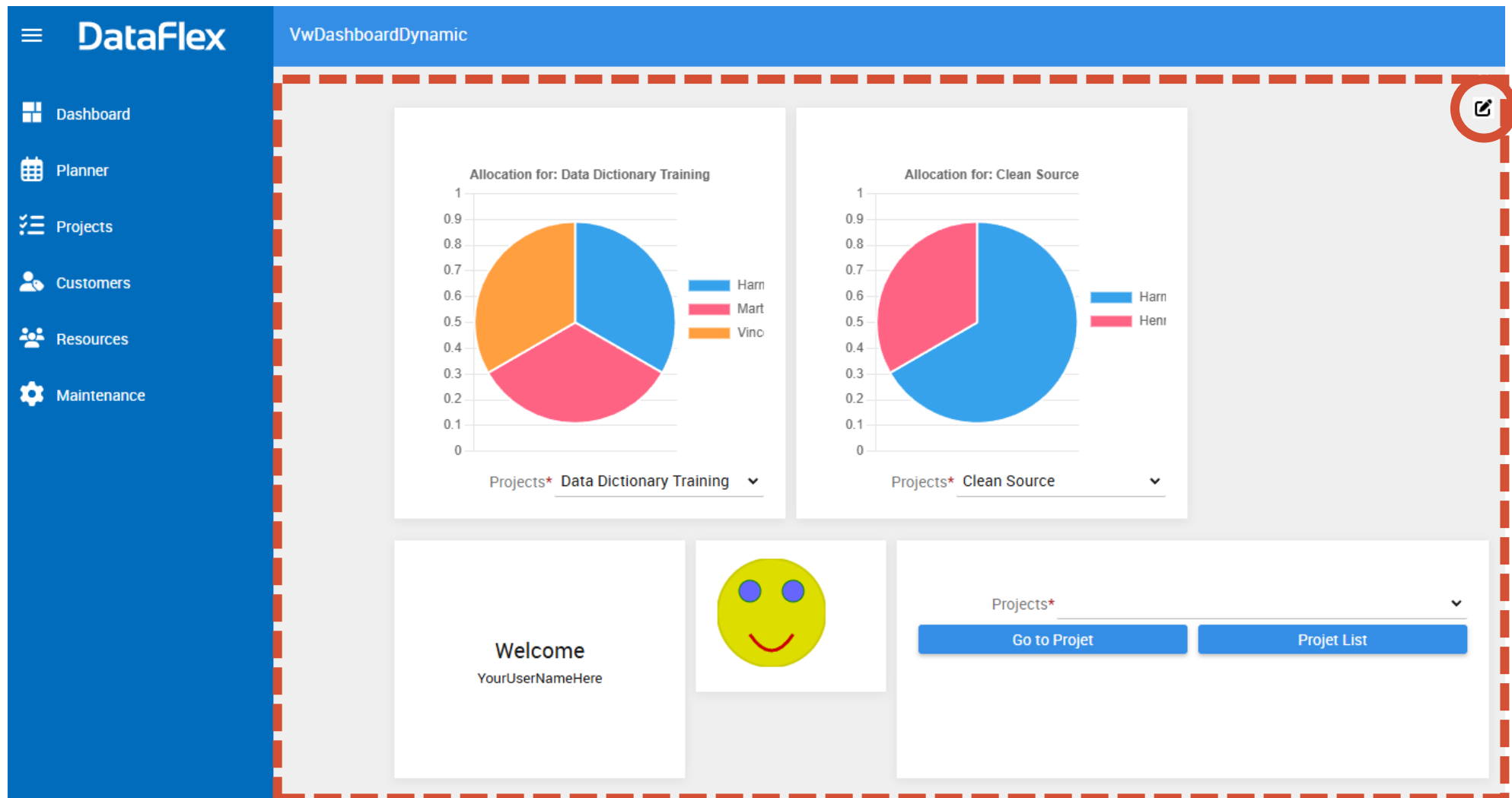
Handles navigation

A view in a box

```
07 Composite oTest is a cWebWidget
08 { WebProperty = Client }
09 Property String psMyCustomProp "Hellow World!"
10
11 Object oCustomer_DD is a cCustomerDataDictionary
12 End_Object
13
14 Set Main_DD to oCustomer_DD
15 Set Server to oCustomer_DD
16
17 Object oCustomers is a cWebList
18 Set pbServerOnRowClick to True
19
20 WebRegisterPath ntNavigateForward oZoomCustomer
21
22 Object oCustName is a cWebColumn
23 Entry_Item Customer.Company
24
25 Set psCaption to "Company name"
26 Set piWidth to 50
27 End_Object
28
29 Procedure OnRowClick String sRowID Integer iColumnIndex
30 Send Navigate
31 End_Procedure
32 End_Object
33 End_Composite
```

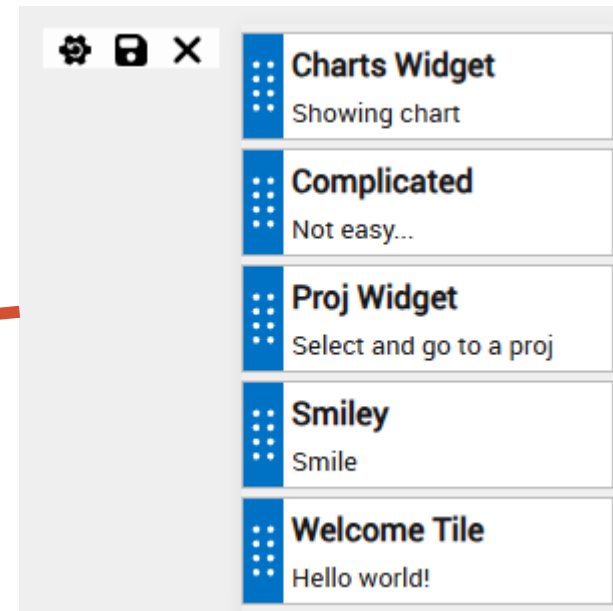


# Place Widgets inside a container

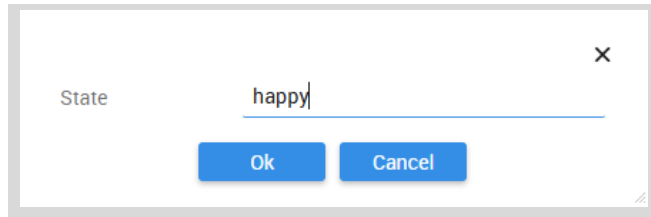
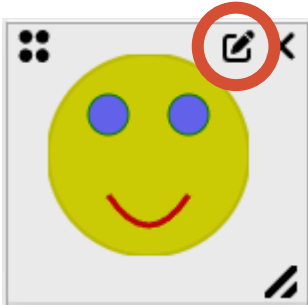


# The container...

```
13 Object oVwDashboardDynamic is a cWebView
14   Set pbServerOnShow to True
15
16 Object oWebMainPanel is a cWebPanel
17   Set piColumnCount to 12
18
19   Object oWidgetContainer is a cWebWidgetContainer
20     Set pbServerOnToggleEditMode to True
21     Set peLayoutType to ltGrid
22     Set piRowCount to 1
23
24     Procedure OnRegisterWidgets
25       Send RegisterWidget (RefClass(oMyWidget))
26       Send RegisterWidget (RefClass(oMyWidgetComplicated))
27     End_Procedure
28
29     Procedure OnToggleEditMode Boolean bEdit
30       Forward Send OnToggleEditMode bEdit
31       WebSet pbRender of oWidgetsPanel to bEdit
32     End_Procedure
33   End_Object
34 End_Object
35
36 Object oWidgetsPanel is a cWebPanel
37   Set piWidth to 200
38   Set pbRender to False
39   Set peRegion to prRight
40   Set psCSSClass to "WidgetPanel"
41
42   Object oWlWidgets is a cWebWidgetPalette
43     Set piColumnSpan to 2
44     Set piColumnIndex to 10
45     Set phoWidgetContainer to oWidgetContainer
46   End_Object
47 End_Object
48
49 Procedure OnLoad
50   Forward Send OnLoad
51   Send LoadConfiguration of oWidgetContainer
52 End_Procedure
53 End_Object
```



# Configure widget



```
02 Use cWebWidgetConfigurationWizardStandard.pkg
03
04 Object oSmileyConfiguration is a cWebWidgetConfigurationWizardStandard
05 End_Object
06
07 Composite oSmileyWidget is a cWebWidget
08 { WebProperty=Server }
09 Property String psState "happy"
10 Set pbAllowConfiguration to True
11
12 ...
31 Procedure CreateDrawing
32   tWebPoint centerPosition toPosition throughPoint toPoint
33   String sState
34   //WebGet psState of oSmileyWidget to sState
35   WebGet psState of (Widget(Self)) to sState
36
37 ...
91
92 Set phoConfigWizard to oSmileyConfiguration
93
94
95 Procedure OnInitializeWidget
96   Send CreateDrawing of oWebDrawing1
97 End_Procedure
98
99 Procedure OnWidgetPropsChanged
100   Send CreateDrawing of oWebDrawing1
101 End_Procedure
102
103
104 Procedure OnGetConfigurableProps tWidgetConfigProp[] ByRef aConfigurableProps
105   Forward Send OnGetConfigurableProps (&aConfigurableProps)
106
107   Get CreateConfigurableProp (Self) (RefFunc(psState)) to aConfigurableProps[0]
108   Move 'State' to aConfigurableProps[0].Settings.sOptLabel
109   Move 0 to aConfigurableProps[0].Settings.eControlType // Form
110 End_Procedure
111
112 End_Composite
```



**Demo**



**What else...**

# List with dynamic controls

The screenshot displays a web application interface for managing system configurations. The main table lists various system components, each with an 'id', a 'name', and dynamic 'Edit' and 'Delete' buttons. A modal dialog is open for editing the 'GDPR-document' entry, showing a file upload field with the filename 'Calc test.xlsx'.

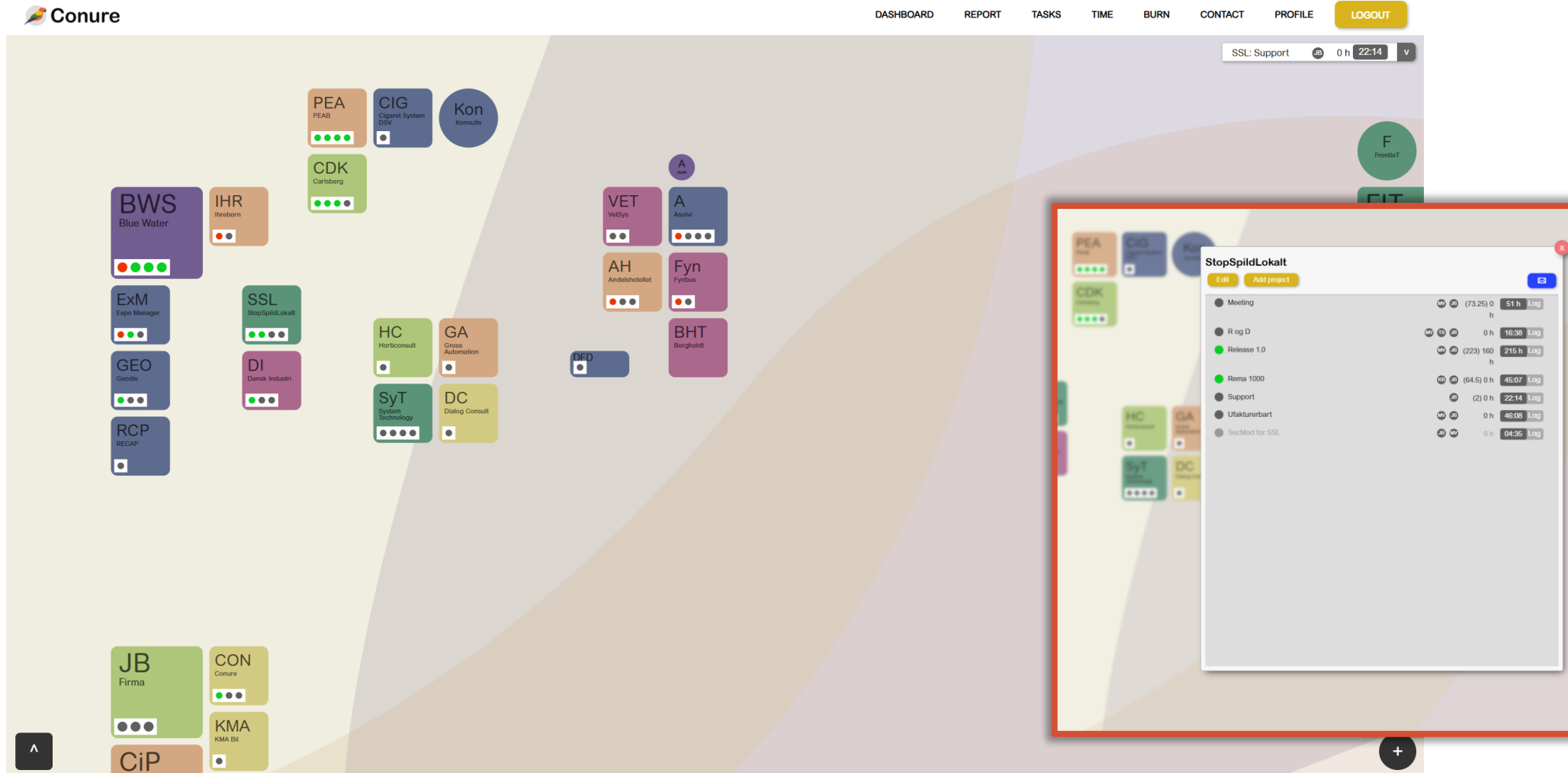
id	name	Template	System	Dynamic Controls
1	Server Manager			
Developer	Johan Broddfelt			Edit Delete
Next audit	2025-11-02			Edit Delete
GDPR-document	Calc test.xlsx			Edit Delete
Business critical data	kontrakter, kontaktinfo, kodeod			Edit Delete
Backup server	92.168.1.55			Edit Delete
Backup interval	weekly			Edit Delete
Backup next test	2025-11-01			Edit Delete
DevelopmentLanguage				Edit
DevLang_version				Edit
GDPR compliant				Edit
NIS2	2025			Edit Delete
NIS2 compliance				Edit

Modal Dialog: GDPR-document

File: Calc test.xlsx

Buttons: OK, Cancel

# Graphical controls



**Thank you!**

**Are there any questions?**