

# DHTMLX Diagram

Albin Wisén – Prosmart System



# DHTMLX Diagram

- We needed a processcontrol that our consultants could use to educate our customers and help them understand their own process for every department.
  - We also needed a way for our customers to educate their new employees.
1. Alternative navigation system specialized for every processflow
  2. Uploading of help documents to every object in a process
  3. Exporting/Importing of an entire processflow so that our consultants could build a process and then send it to a customer.

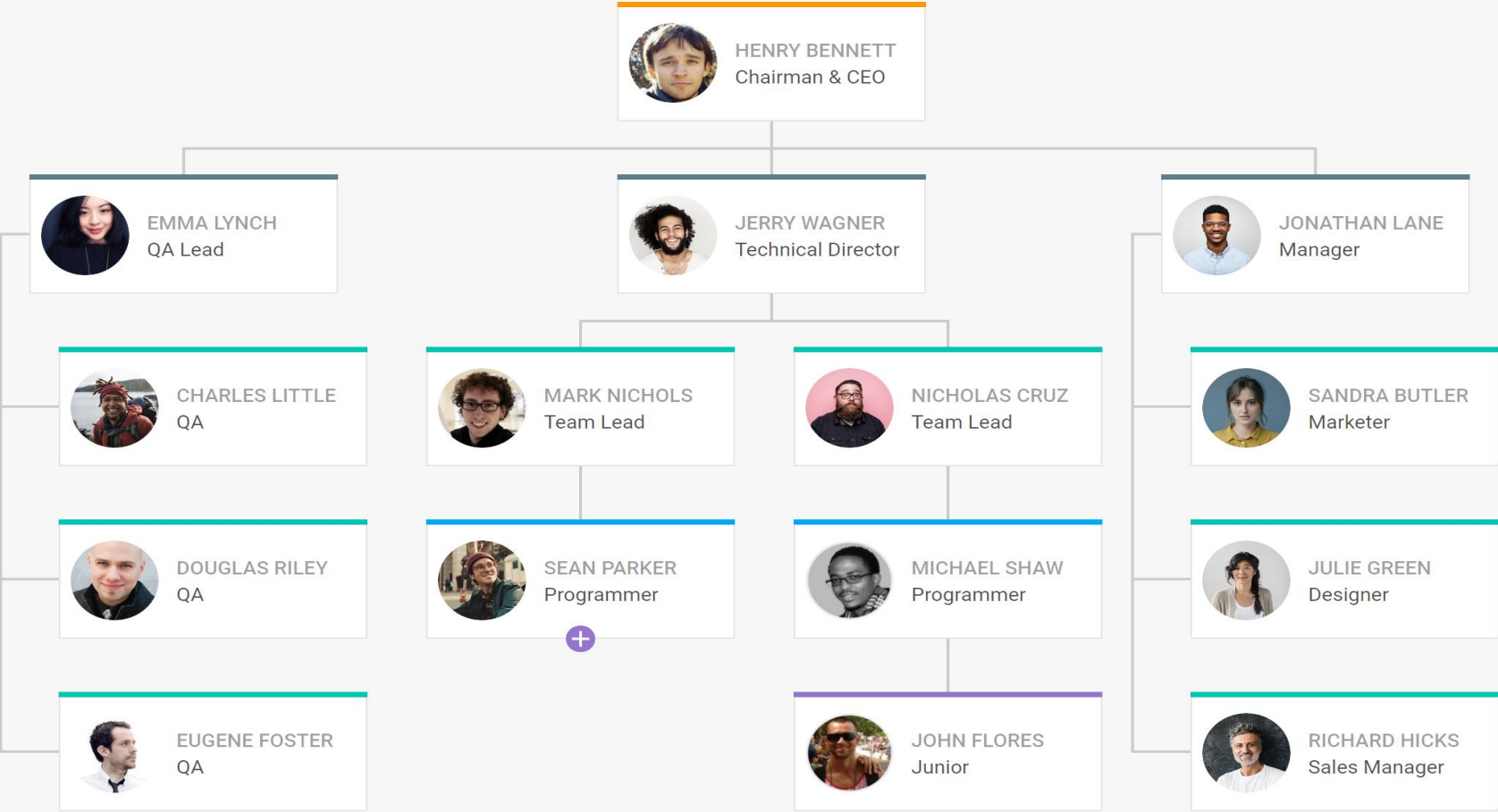
# DHTMLX Diagram

When searching for components we found DHTMLX Diagram.

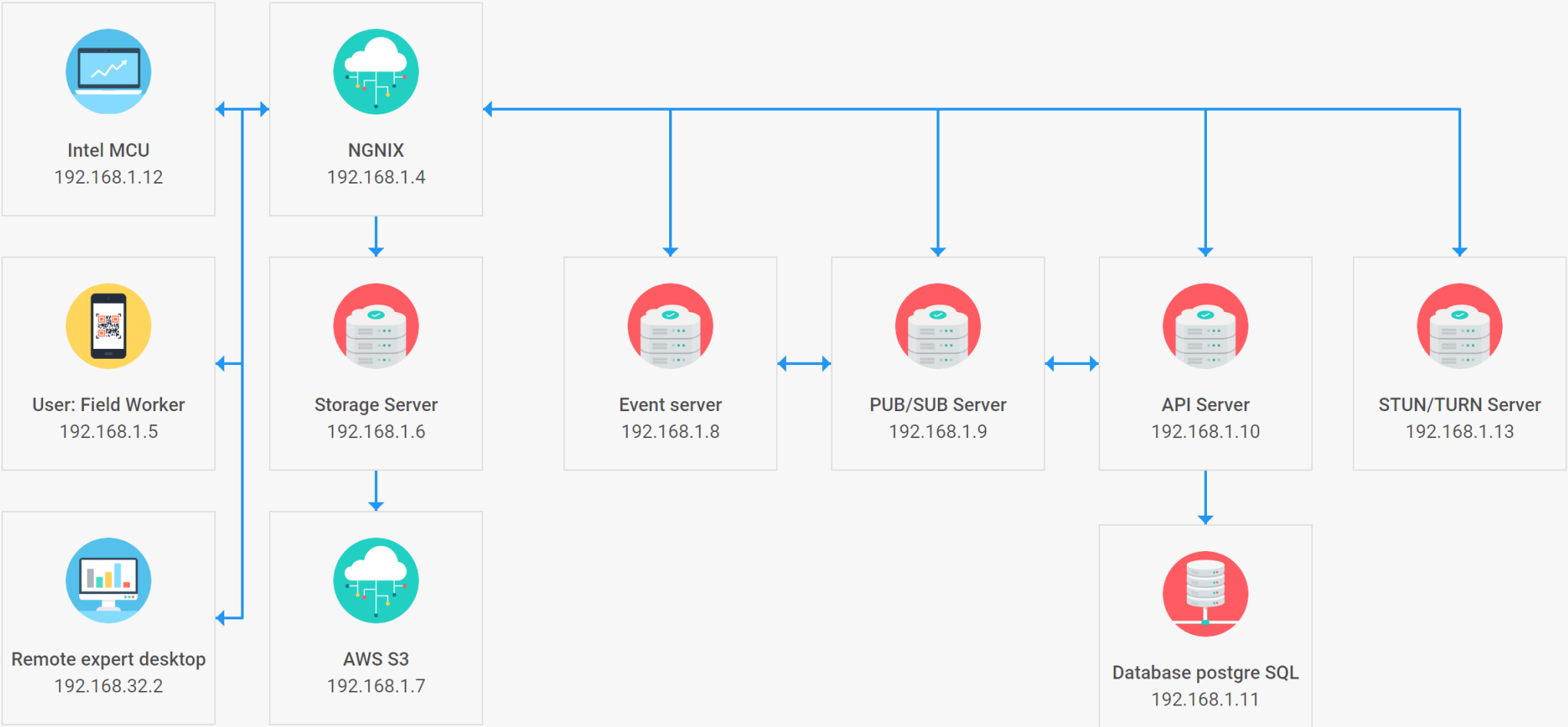
It is a javascript library that can help you visualize complex data like:

- Hierarchy structures
- Mindmaps
- Flowcharts
- Database schemas

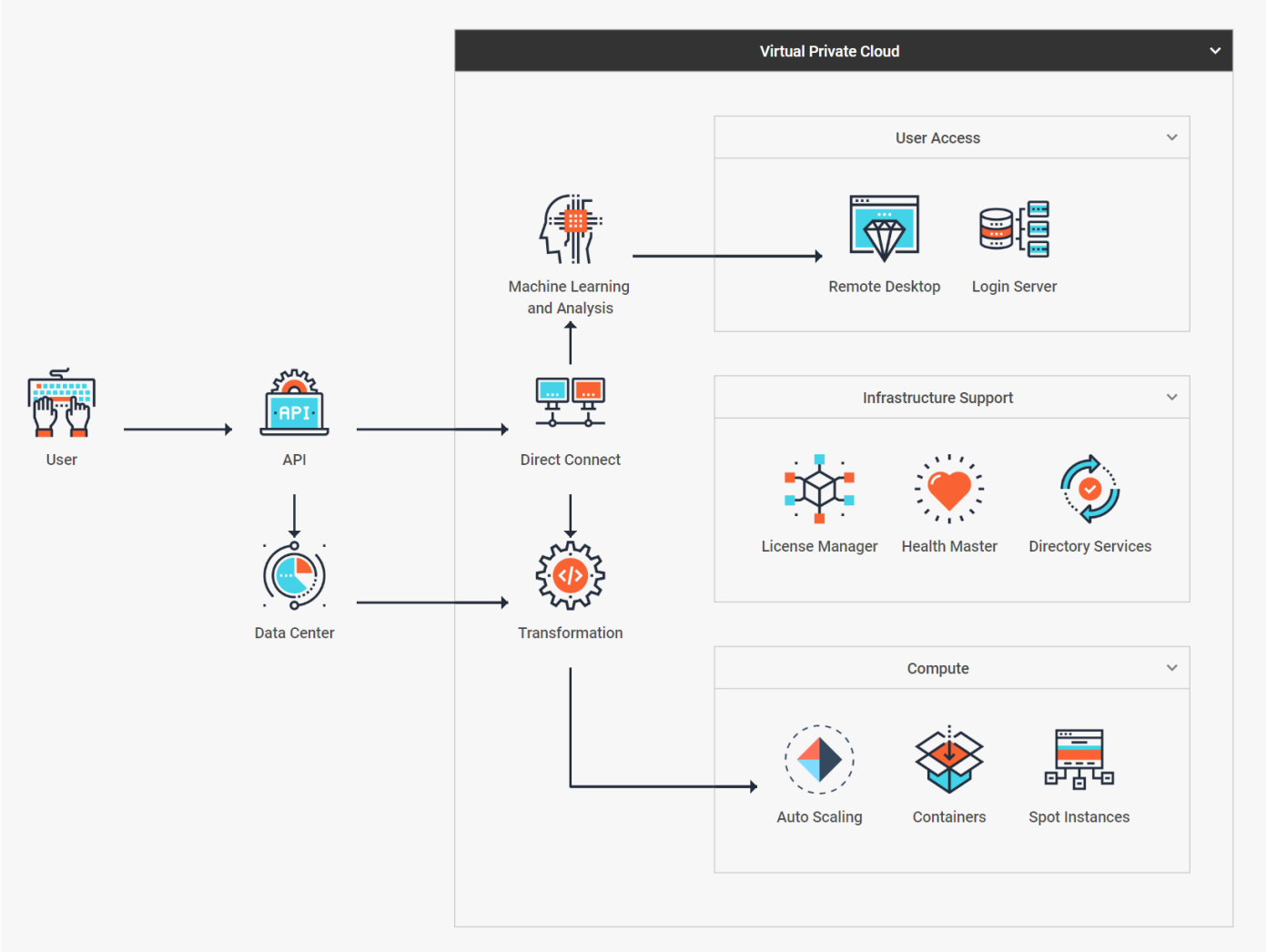
# DHTMLX Diagram - Organisation



# DHTMLX Diagram – Network map



# DHTMLX Diagram – Group diagram



# DHTMLX Diagram

- We were in process of migrating to DataFlex 20 so we asked DataAccess to help us and they built a wrapper class.
- Soufiane from DataAccess created the wrapper class containing an editor and a previewer for us.
- [Process](#)

# DHTMLX Diagram

- We use this to build processflows. But it could be used for other scenarios like viewing an organisation or drawing a database scheme
- If you want this it requires buying a license from DHTMLX. Prices is available on their site.

Questions so far?



# Syncfusion Weblist



# Syncfusion Weblist

- Wrapper class was built by Wil and PP7
- Syncfusion Weblist is a read only weblist with a lot of built in functionality
- If you use codejock reportcontrol, cjGrid or cDBcJGrid it will look familiar to you.

# Syncfusion grid functionality

- Filter the data in any column
- Search entire grid (without writing any code)
- Group the data by dragging columns into the group section
- Export data (without writing any code)
- Show aggregated columns (Total calculations)
- Save the settings for every user

# Syncfusion grid example

Object oMyGrid is a csfWebList

```
Set pbAllowFiltering to true // Allow the user to filter on any column
```

```
Set pbAllowGrouping to true // Allow the user to group on any column
```

```
Set pbAllowSorting to true // Allow the user to sort on any column
```

```
Set pbShowColumnChooser to true // Allow the user hide/show columns from a list
```

```
Set pbShowColumnMenu to true // Show a menu in the grid headers
```

```
Set pbAllowExcelExport to true // Allow the user to export the data to excel
```

Object oMyColumn is a csfWebColumn

```
Set pbAllowGrouping to false // is grouping allowed on this column
```

```
Set pbAllowSearching to false // is searching allowed on this column
```

```
Set pbShowInColumnChooser to false // Hide/Show column in ColumnChooser menu
```

Demo

**Thank you!**  
**Are there any questions?**

